

Last information update: October 2024

#### Product configuration: N374+N366.01

N374: Plate - wall washer - DALI - LED warm - L 1196

N366.01: Module for a continuous line L 3596 - Frame - White



#### Product code

N374: Plate - wall washer - DALI - LED warm - L 1196

#### Technical description

LED module set up for housing in iN60 Wall Washer system initial or intermediate profiles. Extruded aluminium heat sink linear element, formally designed to house the exclusive asymmetric optic system that generates an even and effective wall washer emission. Linear PMMA screen combined with a special acrylic film; anodised aluminium main beam reflector and side reflectors. Supplied with integrated dimmable DALI control gear. Warm white LED.

#### Installation

Module insertion on profiles with a mechanical easy-push system (steel snap-on spring).

#### Colour

Black (04)

#### Weight (Kg)

1.94

#### Mounting

ceiling recessed|ceiling surface|ceiling pendant

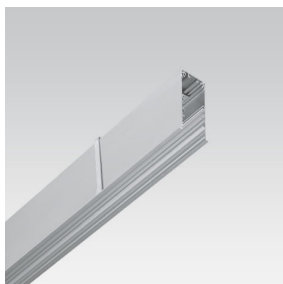
#### Wiring

Quick coupling terminal block connection for simplified luminaire installation. LED module complete with integrated DALI control gear. Dimming options with DALI devices or a normally open (N.O.) pushbutton (PUSH DIM)

#### Notes

The module houses the specific optic system for wall washer emission; to ensure correct installation consult the instruction leaflet.

Complies with EN60598-1 and pertinent regulations



#### Product code

N366.01: Module for a continuous line L 3596 - Frame - White

#### Technical description

Frame version extruded aluminium intermediate profile with contact frame, designed to house specific Wall Washer emission LED plates. The intermediate profile allows continuous lines to be created with other intermediate profiles and an initial profile (required).

#### Installation

Recessed using the brackets on the profile; the mechanical systems for connecting the modules are included in the package.

#### Colour

White (01)

#### Weight (Kg)

8

#### Mounting

ceiling recessed

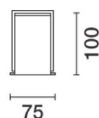
#### Wiring

The intermediate profile for a continuous line has no pass-through wiring; wiring accessories of various lengths are available to suit the composition and size of the line installed. Set up to house the LED modules required by the system.

#### Notes

Take care with the system configuration. To complete a continuous line correctly there must always be an initial module at the start or end of the composition.

Complies with EN60598-1 and pertinent regulations



# Technical data

Im system:	5307
W system:	51
Im source:	8700
W source:	51
Luminous efficiency (Im/W, real value):	104.1
Im in emergency mode:	-
Total light flux at or above an angle of 90° [Lm]:	1
Light Output Ratio (L.O.R.) [%]:	61
CRI (minimum):	80
Colour temperature [K]:	3000
MacAdam Step:	3

Lamp code:	LED
Number of lamps for optical assembly:	1
ZVEI Code:	LED
Number of optical assemblies:	1
Power factor:	See installation instructions
Inrush current:	26 A / 140 µs
Maximum number of luminaires of this type per miniature circuit breaker:	B10A: 15 luminaires B16A: 24 luminaires C10A: 24 luminaires C16A: 40 luminaires
Minimum dimming %:	1
Overvoltage protection:	2kV Common mode & 1kV Differential mode
Control:	DALI-2

## Polar

