

## Laser Blade

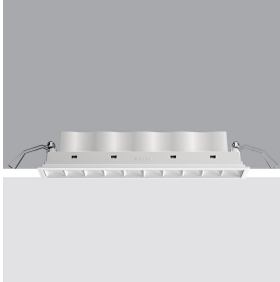
Design iGuzzini

iGuzzini

Last information update: April 2025

### Product configuration: P132.01

P132.01: 10 - cell Recessed luminaire - LED - Warm white spot - White



### Product code

P132.01: 10 - cell Recessed luminaire - LED - Warm white spot - White

### Technical description

rectangular miniaturised recessed luminaire with 10 optical elements with LED lamps - fixed optics - spot beam angle. Main body with die-cast aluminium radiant surface, version with perimeter surface frame. Metallised thermoplastic high definition optics, integrated in a rear position in the black anti-glare screen; the structure of the optical system prevents a pinpoint effect, allowing precise, circular light distribution and emission with controlled glare. Supplied with DALI dimmable electronic control gear connected to the luminaire. Warm white LED.

### Installation

recessed with steel wire springs for false ceilings from 1 to 25 mm thick - preparation hole 37 x 274

### Colour

White (01)

### Weight (Kg)

0.6

### Mounting

wall recessed/ceiling recessed

### Wiring

on control gear box with quick-coupling connections

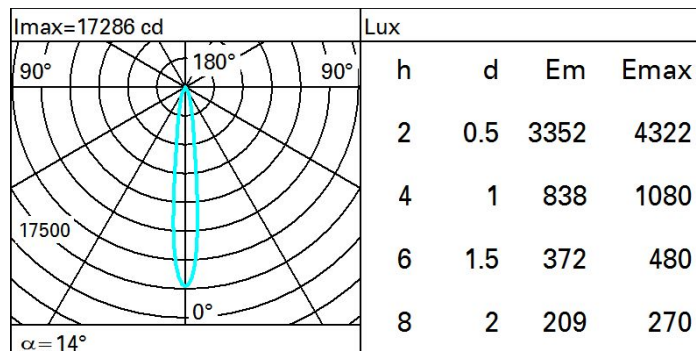
Complies with EN60598-1 and pertinent regulations



### Technical data

|  |      |                                       |                                 |
|--|------|---------------------------------------|---------------------------------|
| Im system:   | 1804 | CRI (typical):                        | 92                              |
| W system:  | 23.4 | Colour temperature [K]:               | 3000                            |
| Im source:   | 2200 | MacAdam Step:                         | 3                               |
| W source:  | 20   | Life Time LED 1:                      | > 50,000h - L90 - B10 (Ta 25°C) |
| Luminous efficiency (Im/W, real value):            | 77.1 | Lamp code:                            | LED                             |
| Im in emergency mode:                              | -    | Number of lamps for optical assembly: | 1                               |
| Total light flux at or above an angle of 90° [Lm]: | 0    | ZVEI Code:                            | LED                             |
| Light Output Ratio (L.O.R.) [%]:                   | 82   | Number of optical assemblies:         | 1                               |
| Beam angle [°]:                                    | 14°  | Control:                              | DALI-2                          |
| CRI (minimum):                                     | 90   |                                       |                                 |

### Polar



Utilisation factors

| R    | 77 | 75 | 73 | 71 | 55 | 53 | 33 | 00 | DRR |
|------|----|----|----|----|----|----|----|----|-----|
| K0.8 | 74 | 70 | 68 | 66 | 70 | 67 | 67 | 64 | 78  |
| 1.0  | 77 | 74 | 72 | 70 | 73 | 71 | 71 | 68 | 83  |
| 1.5  | 81 | 79 | 77 | 75 | 78 | 76 | 75 | 73 | 89  |
| 2.0  | 84 | 82 | 80 | 79 | 81 | 79 | 78 | 76 | 93  |
| 2.5  | 85 | 84 | 83 | 82 | 83 | 82 | 81 | 79 | 96  |
| 3.0  | 86 | 85 | 84 | 84 | 84 | 83 | 82 | 80 | 98  |
| 4.0  | 87 | 86 | 86 | 85 | 85 | 85 | 83 | 82 | 99  |
| 5.0  | 88 | 87 | 87 | 87 | 86 | 85 | 84 | 82 | 100 |

---