

Blade R downlight

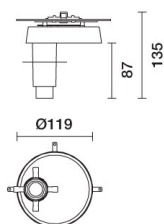
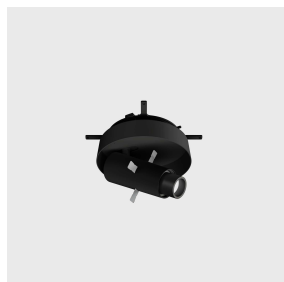
Design iGuzzini

iGuzzini

Last information update: October 2024

Product configuration: PB15+GOBO_D05+F_MAX

PB15: accessory cover with framer projector - mechanical inclination lock



Product code

PB15: accessory cover with framer projector - mechanical inclination lock

Technical description

Miniaturised round swivel luminaire complete with LED profiler projector in warm white colour tone (3000K). Version compatible with Blade R diam 170mm (18LED) complete with device for coupling it to the luminaire and DALI control gear. Die-cast aluminium technical body for LED lamp - an external pin that is activated manually allows the inclination of the luminaire to be locked and guarantee stability and high precision aiming - high definition OptiBeam reflector. The aluminium optical assembly includes a sophisticated telecentric optics system consisting of four anti-reflection-treated glass lenses. Black anodised aluminium locknut for manual focusing. The innovative optical system, combined with the option of manual adjustment and four shaping flaps, allows precise, well-defined wall lighting with no halo effects or soft edges. The optical assembly is fixed to the technical body with a rapid and practical magnetic system. This solution allows it to be rotated by 360° which increases its versatility considerably. The spotlight is designed to obtain a square, rectangular or variously irregular beam by manoeuvring the flaps. The package includes two gobos for circular shapes.

Installation

accessory with miniaturised swivel profiler projector for Blade R diam 170mm (18LED)

Colour

White (01) | Black (04)

Weight (Kg)

0.61

Notes

Equipped with a mechanical inclination lock operated manually

Complies with EN60598-1 and pertinent regulations



IP20

IP23



pending

Technical data

| | | | |
|--|------|--|---|
| Im system: | 34.5 | Life Time LED 1: | > 50,000h - L90 - B10 (Ta 25C) |
| W system: | 8.5 | Lamp code: | LED |
| Im source: | 690 | Number of lamps for optical assembly: | 1 |
| W source: | 6.4 | ZVEI Code: | LED |
| Luminous efficiency (lm/W, real value): | 4.06 | Number of optical assemblies: | 1 |
| Im in emergency mode: | - | Power factor: | See installation instructions |
| Total light flux at or above an angle of 90° [Lm]: | 0.0 | Inrush current: | 5 A / - µs |
| Light Output Ratio (L.O.R.) [%]: | 5 | Maximum number of luminaires of this type per miniature circuit breaker: | B10A: 81 luminaires B16A: 130 luminaires C10A: 135 luminaires C16A: 221 luminaires |
| Beam angle [°]: | 12° | Minimum dimming %: | 1 |
| CRI: | 90 | Overvoltage protection: | 0kV Common mode & 0kV Differential mode |
| Colour temperature [K]: | 3000 | Control: | DALI-2 |
| MacAdam Step: | 2 | | |