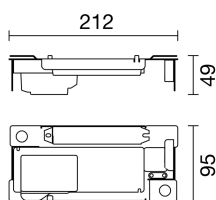
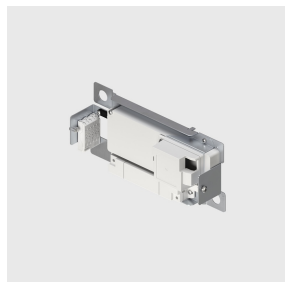


Last information update: April 2025

**Accessory code**

PE93: Surface-mounted bracket complete with 60 W - 48 V DALI dimmable power supply.

**Technical description**

Surface-mounted bracket complete with 60 W DALI dimmable power supply to be connected to the cover base.

48 V constant voltage dimmable electronic power supply.

The power supply features include overvoltage protection, short circuit protection, overcurrent and overtemperature protection.

**Installation**

Surface-mounted. Fitted with slots for fastening with screws.

| Colour             | Weight (Kg) | Dimension (mm) (*) |
|--------------------|-------------|--------------------|
| Indeterminate (00) | 0.39        | 212x95x49          |

\* The dimensions may change according to production requirements to ensure that performance levels and installation methods are observed.

**Notes**

To complete with suitable closure cover.

Consult the instruction sheet for the number of luminaires that can be connected.

Standard: EN 62386-101 / 102 / 207 (including part 251, 252, 253).

Complies with EN60598-1 and pertinent regulations



IP20

**Technical data**

|  |   |                         |   |
|--|---|-------------------------|---|
| Frequency [Hz]:  | 0/50/60   | Overvoltage protection: | 2kV Common mode & 1kV Differential mode |
| Inrush current:  | 39 A / 187 $\mu$ s  | Control:                | DALI-2                                  |
| Maximum number of LED power supply units of this type per miniature circuit breaker: | B10A: 9 power supply units<br>B16A: 15 power supply units<br>C10A: 15 power supply units<br>C16A: 25 power supply units |                         |   |