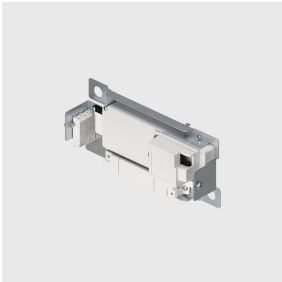


Last information update: April 2025



Accessory code

PE95: Surface-mounted bracket complete with 150 W - 48 V DALI dimmable power supply.

Technical description

Surface-mounted bracket complete with 150 W DALI dimmable power supply to be connected to the cover base.
48 V constant voltage dimmable electronic power supply.
The power supply features include overvoltage protection, short circuit protection, overcurrent and overtemperature protection.

Installation

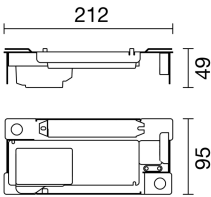
Surface-mounted. Fitted with slots for fastening with screws.

Colour	Weight (Kg)	Dimension (mm) (*)
Indeterminate (00)	0.39	212x95x49
* The dimensions may change according to production requirements to ensure that performance levels and installation methods are observed.		

Notes

To complete with suitable closure cover.
Consult the instruction sheet for the number of luminaires that can be connected.
Standard: EN 62386-101 / 102 / 207

Complies with EN60598-1 and pertinent regulations



Technical data

Frequency [Hz]:	50/60	Overvoltage protection:	4kV Common mode & 2kV Differential mode
Inrush current:	100 A / - µs	Control:	DALI-2