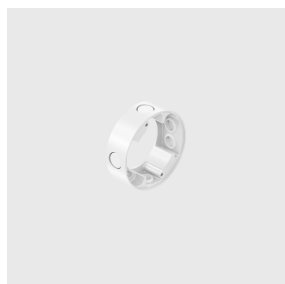

pacer base for installation using conduit for the Lingotto family with base and Palco InOut (Ø83 mm Class II, Ø119 mm, Ø137 mm, Ø153 mm, Framer Ø116 mm and Framer Ø153 mm).

Design iGuzzini

iGuzzini

Last information update: March 2025



Accessory code

XA14: pacer base for installation using conduit for the Lingotto family with base and Palco InOut (Ø83 mm Class II, Ø119 mm, Ø137 mm, Ø153 mm, Framer Ø116 mm and Framer Ø153 mm).

Technical description

Aluminum spacer base, suitable for the installation of the Lingotto family with base and Palco InOut (Ø83 mm Class II, Ø119 mm, Ø137 mm, Ø153 mm, Framer Ø116 mm and Framer Ø153 mm) through conduit pipes. The base has 5 holes with a diameter of Ø16 mm. The accessory code includes 5 sealing grommets to close unused holes during installation.

Colour

White (01) | Black (04) | Grey (15) | Rust Brown (F5)

Mounting

wall surface

Complies with EN60598-1 and pertinent regulations
