

Superrail is a structure allowing an infinite number of lighting solutions. This miniature 48V low voltage track is only 25mm wide and can be configured in infinite lengths in a continuous and seamless manner. Superrail recessed trimless can be installed as a ceiling or wall system. Various professional lighting tools can be integrated such as general lighting modules or low voltage spotlights thereby offering an infinity of combinations. Ideal for exhibition spaces, retail, hospitality and residences.

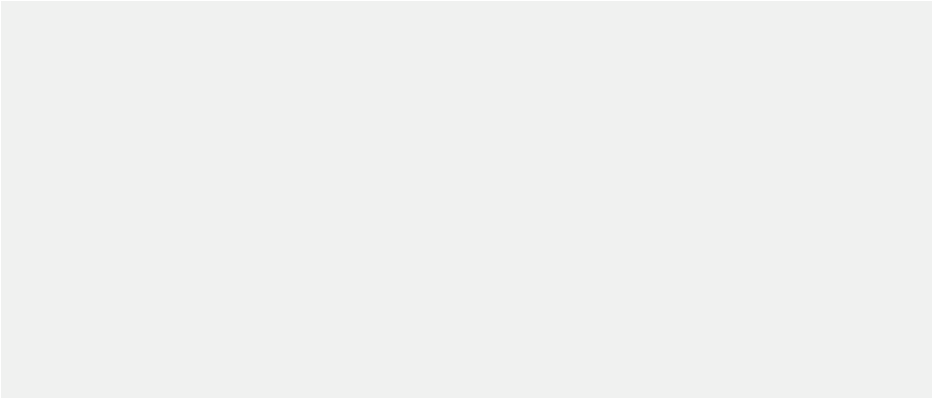
<b>Material:</b>	Extruded aluminum / insulated copper conductor.
<b>Mounting:</b>	Trim recessed. If required, can be cut on site.
<b>Electrical:</b>	48V remote LED driver. <b>Maximum 100W per feed.</b> See remote LED driver options on page 4.
<b>Dimming:</b>	0-10V Single channel for complete track control. DALI individual luminaire control. See remote LED driver details on page 4.
<b>Finish:</b>	Track: White or black painted finish. Accessories: White or black color.
<b>Weight:</b>	L500: 1.17lb (0.53kg) L1000: 2.32lb (1.05kg) L2000: 4.63lb (2.10kg) L3000: 6.92lb (3.14kg)
<b>Warranty:</b>	5 year limited warranty.
<b>Certification:</b>	cULus listed for dry location



ORDERING INFO



PRODUCT CODE			
MODEL	LENGTH	VOLTAGE	FINISH
ITRRF-SR Recessed trim	<b>1.6</b> 1.6" (500mm)	<b>48</b> 48V	<b>01</b> White
	<b>3.3</b> 3.3" (1000mm)		<b>02</b> Black
	<b>6.5</b> 6.5" (2000mm)		
	<b>9.8</b> 9.8" (3000mm)		



**MOUNTING ACCESSORIES**  
(TO BE ORDERED SEPARATELY)

**L-SHAPE MECHANICAL JOINT**  
Insulation tape included

- ☐ **IPB39-01** - White finish  
☐ **IPB39-02** - Black finish



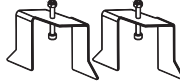
**STRAIGHT MECHANICAL JOINT**

- ☐ **IPB46**



**FIXING BARS**

- ☐ **IPB52**



**TRACK ACCESSORIES**  
(TO BE ORDERED SEPARATELY)

**END CAPS KIT FOR SUPERRAIL**

- ☐ **IPB56-01** - White finish  
☐ **IPB56-02** - Black finish



**COVER STRIP**  
2 Pcs of 39" (1m)

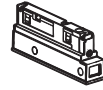
- ☐ **IPB59-01** - White finish  
☐ **IPB59-02** - Black finish



**ELECTRICAL TRACK ACCESSORIES**  
(TO BE ORDERED SEPARATELY)

**POWER SUPPLY CAP**  
Max 100W per feeder

- ☐ **IPB43-01** - White finish  
☐ **IPB43-02** - Black finish



**L-SHAPE JOINT**

- ☐ **IPB42-01** - White finish  
☐ **IPB42-02** - Black finish



**STRAIGHT JOINT**

- ☐ **IPB45-01** - White finish  
☐ **IPB45-02** - Black finish



**L-SHAPE WALL TO CEILING JOINT**

- ☐ **IMZ42-01** - White finish  
☐ **IMZ42-02** - Black finish



## REMOTE LED DRIVER OPTIONS

(TO BE ORDERED SEPARATELY)

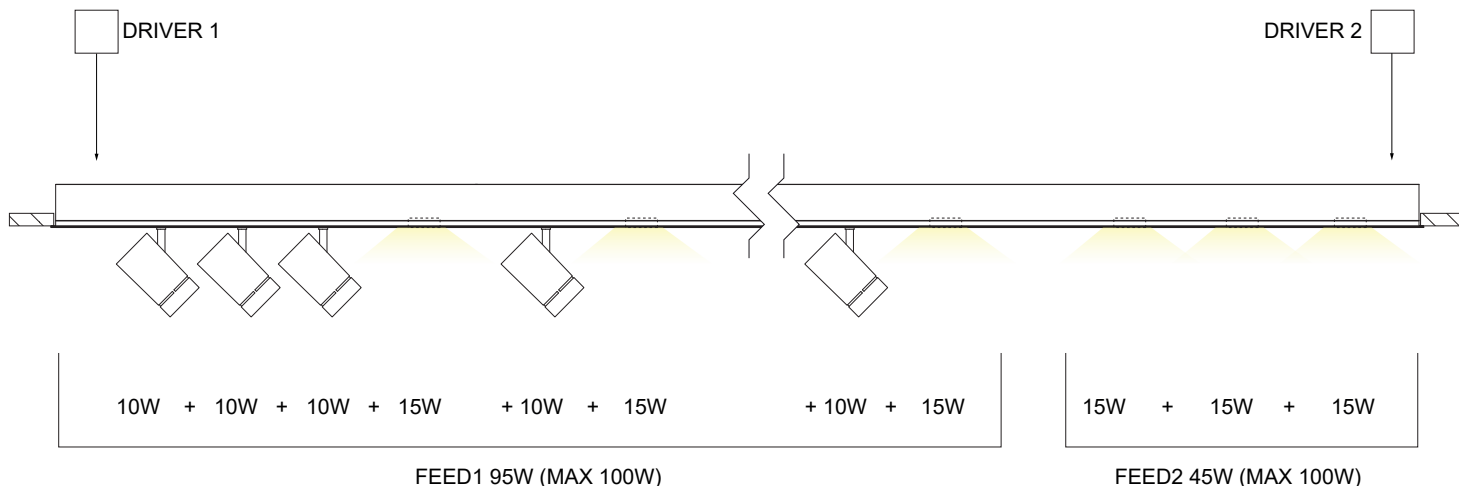
Requirement: Max 100W per circuit.

Watts	Min Watts	Voltage	Rated	Dimming protocol	Dimming range	Dimension	Max distance*
<input type="checkbox"/>	<b>4444-0048-035-UNV-ND</b>						
<b>35</b>	—	120-277V	Indoor	None	—	6" x 4" x 3" (152 X 102 X 76mm)	98ft (30m)
<input type="checkbox"/>	<b>4444-0048-072-UNV-ND</b>						
<b>72</b>	—	120-277V	Indoor	None	—	6" x 4" x 3" (152 X 102 X 76mm)	98ft (30m)
<input type="checkbox"/>	<b>4450-0048-096-UNV-ND</b>						
<b>96</b>	4.8W	120-277V	Indoor	None	—	8" x 8" x 4" (203 X 203 X 102mm)	98ft (30m)
<input type="checkbox"/>	<b>4451-0048-100-UNV-TD10</b>						
<b>100</b>	—	120-277V	Indoor	0-10V	Down to ±6%	18" x 4" x 4" (457 x 102 x 102mm)	98ft (30m)
<input type="checkbox"/>	<b>4451-0048-100-UNV-TDA**</b>						
<b>100</b>	—	120-277V	Indoor	Dali	Down to ±6%	18" x 4" x 4" (457 x 102 x 102mm)	98ft (30m)
<input type="checkbox"/>	<b>4546-0048-200-2C-UNV-ND</b>						
<b>200</b>	—	120-277V	Indoor / outdoor	None	—	13" x 5" x 3" (330 X 127 X 76mm)	2 x 98ft (30m)

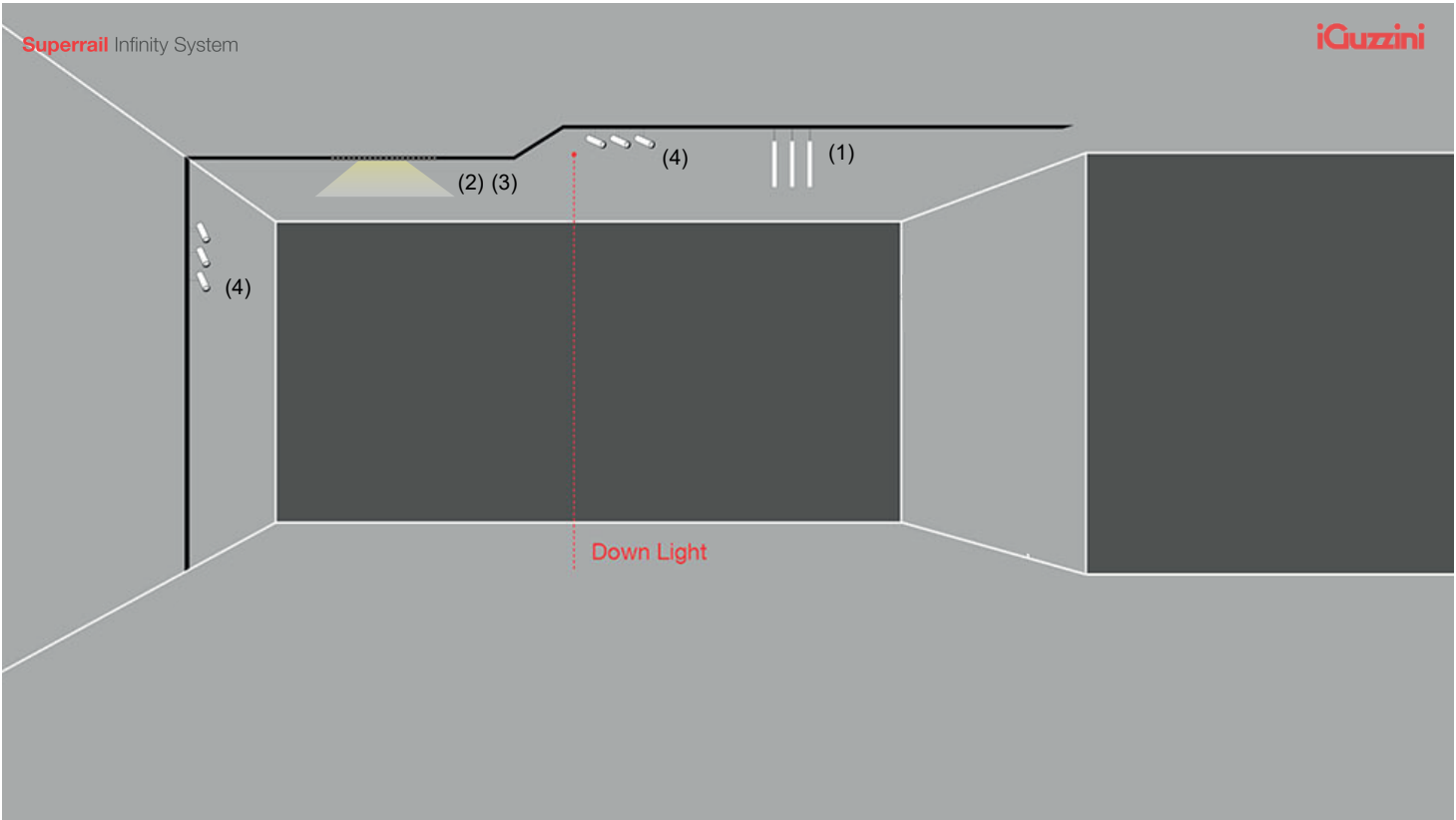
\*Calculated for 16 or 18 awg cable. Total length is for cable + track.

\*\*DALI Up to 20 individual fixture addressing and control.

## INSTALLATION EXAMPLE (100W MAXIMUM PER FEED)



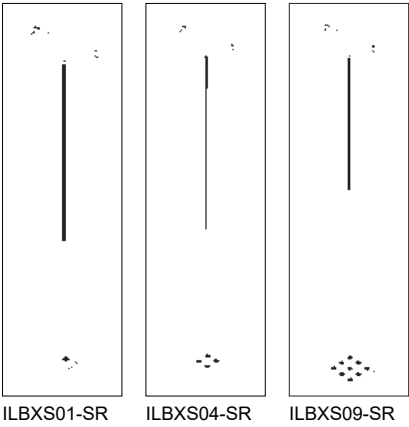
**SYSTEM OVERVIEW**



**LIGHTING TOOLS AVAILABLE FOR SUPERRAIL**

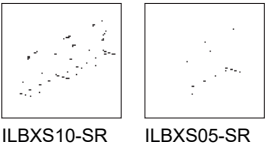
**PENDANT**

**LASER BLADE XS (1)**



**MODULE**

**LASER BLADE XS (2)**

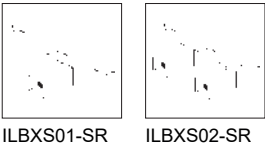


**LED STICK (3)**



**TRACK HEAD**

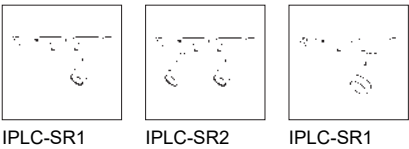
**LASER BLADE XS (4)**



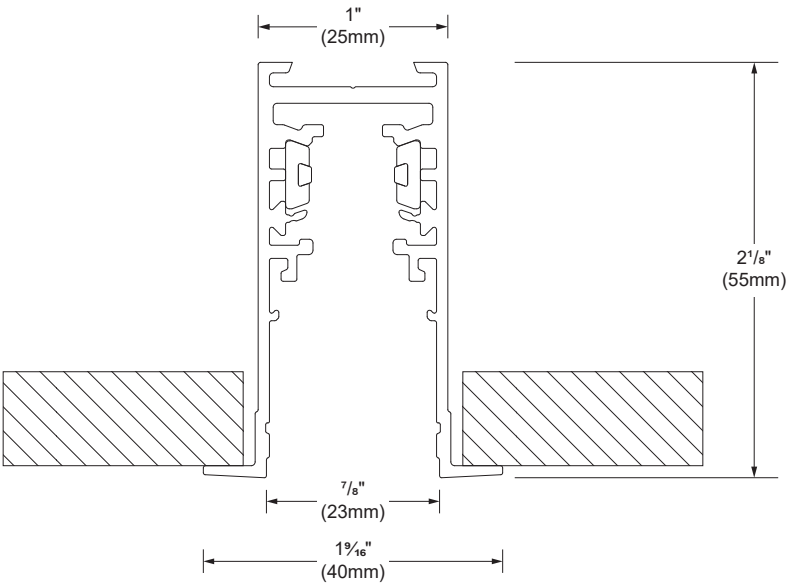
**ROBIN (4)**



**PALCO LV (4)**



**DIMENSIONS**



**FRONT VIEW**

**LENGTHS**

<b>1.6'</b>	 L : 1'-7 5/8" (500mm)
<b>3.3'</b>	 L : 3'-3 3/8" (1000mm)
<b>6.5'</b>	 L : 6'-6 3/4" (2000mm)
<b>9.8'</b>	 L : 9'-10 1/8" (3000mm)