

Last information update: January 2025

Product configuration: RR21.01

RR21.01: Dimmable electronic Ø102mm DALI body - Super Spot optic - Neutral White - 13.9W 610.4lm - 4000K - CRI 90 - White

**Product code**

RR21.01: Dimmable electronic Ø102mm DALI body - Super Spot optic - Neutral White - 13.9W 610.4lm - 4000K - CRI 90 - White

Technical description

Adjustable spotlight with adapter for installation on an electrified track or base. High chromatic yield LED lamp with Neutral White (4000K) tone and OptiBeam Lens optic system and Super Spot optic. Dimmable electronic DALI power supply integrated in product. Luminaire made of die-cast aluminium and thermoplastic material that allows a 360° rotation about the vertical axis and 90° tilting relative to the horizontal plane with mechanical aiming locks. Passive heat dissipation. Spotlight with "Push&Go" system designed to hold up to two flat accessories at the same time. The same system can also be used to apply another external component selected from the directional flaps and anti-glare screen. All internal accessories rotate 360° about the spotlight longitudinal axis.

Installation

Installation on an electrified track or base.

Colour

White (01)

Weight (Kg)

1.33

Mounting

wall surface/ceiling surface

Wiring

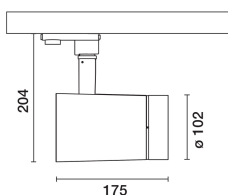
Electronic components integrated in product

Complies with EN60598-1 and pertinent regulations



IP20

IP40

for optical
assembly**Technical data**

lm system:	610	CRI (minimum):	90
W system:	13.9	Colour temperature [K]:	4000
lm source:	1090	MacAdam Step:	2
W source:	11	Life Time LED 1:	> 50,000h - L90 - B10 (Ta 25°C)
Luminous efficiency (lm/W, real value):	43.9	Lamp code:	LED
lm in emergency mode:	-	Number of lamps for optical assembly:	1
Total light flux at or above an angle of 90° [Lm]:	0	ZVEI Code:	LED
Light Output Ratio (L.O.R.) [%]:	56	Number of optical assemblies:	1
Beam angle [°]:	7.7°	Control:	DALI-2

Polar

Imax=25116 cd		Lux			
h	d	Em	Emax		
2	0.3	4720	6279		
4	0.5	1180	1570		
6	0.8	524	698		
8	1.1	295	392		

Utilisation factors

R	77	75	73	71	55	53	33	00	DRR
K0.8	50	48	46	44	47	46	45	43	78
1.0	53	50	48	47	50	48	48	46	82
1.5	55	53	52	51	53	52	51	49	88
2.0	57	56	55	54	55	54	53	52	93
2.5	58	57	56	56	56	56	55	53	95
3.0	59	58	57	57	57	57	56	55	97
4.0	59	59	59	58	58	58	57	55	99
5.0	60	59	59	59	59	58	57	56	100

Luminance curve limit

