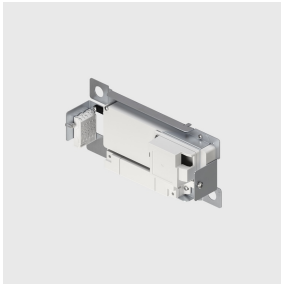


Last information update: May 2025

**Accessory code**

PS33: Surface-mounted bracket - CASAMBI protocol - complete with 100 W - 48 V power supply

---

**Technical description**

Surface-mounted bracket complete with Casambi interface and 100 W - 48 V dimmable power supply to be connected to the cover base.

The components used allow the Libera luminaires to be controlled with the Casambi system app and components, enabling on-off, dimming and scene recall functions and allowing multiple luminaires to operate in a Casambi mesh network. 2.4 GHz bluetooth frequency. The app is available on the Apple Store and Google Play Store. Integrated Beacon that can be activated via an app (iBeacon) that enables smart functions for third party applications and the Jiminy Push Notification app. Power supply features include overvoltage protection, short circuit protection, overcurrent and overtemperature protection.

---

**Installation**

Surface-mounted. Fitted with slots for fastening with screws.

---

**Colour**

Indeterminate (00)

---

**Notes**

To complete with suitable closure cover.

Consult the instruction sheet for the number of luminaires that can be connected.

Max distance between Casambi Bracket and other Casambi Bracket 8 m.

Max distance between Smartphone and Casambi Bracket 8 m.

The maximum distance is affected by physical obstacles, like walls, metal panels and the layout of the system.

Complies with EN60598-1 and pertinent regulations



IP20

---

**Technical data**

Control: Casambi

---