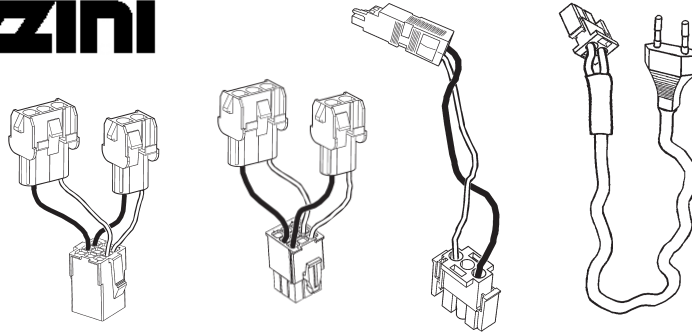


DALI MAGIC CABLES



I ATTENZIONE:

LA SICUREZZA DELL'APPARECCHIO E' GARANTITA SOLO CON L'USO APPROPRIATO DELLE SEGUENTI ISTRUZIONI; PERTANTO E' NECESSARIO CONSERVARLE.

GB WARNING:

THE SAFETY OF THIS FIXTURE IS GUARANTEED ONLY IF YOU COMPLY WITH THESE INSTRUCTIONS; REMEMBER TO CONSERVE IN A SAFE PLACE.

F ATTENTION:

LA SECURITE DE L'APPAREIL N'EST GARANTIE QU'EN CAS D'UTILISATION CORRECTE DES INSTRUCTIONS SUIVANTES; IL FAUT PAR CONSEQUENT LES CONSERVER.

D ACHTUNG:

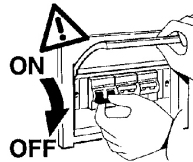
DIE SICHERHEIT DES GERÄTES WIRD NUR DURCH SACHGEMÄSSE BEFOLGUNG NACHSTEHENDER ANWEISUNGEN GEWÄHRLEISTET; IHRE AUFBEWAHRUNG IST DESHALB SEHR WICHTIG.

E ATENCION:

LA SEGURIDAD DEL APARATO SE GARANTIZA SOLO CUMPLIENDO CUIDADOSAMENTE LAS SIGUIENTES INSTRUCCIONES; POR ELLO, ES NECESARIO CONSERVARLAS.

CN 警告

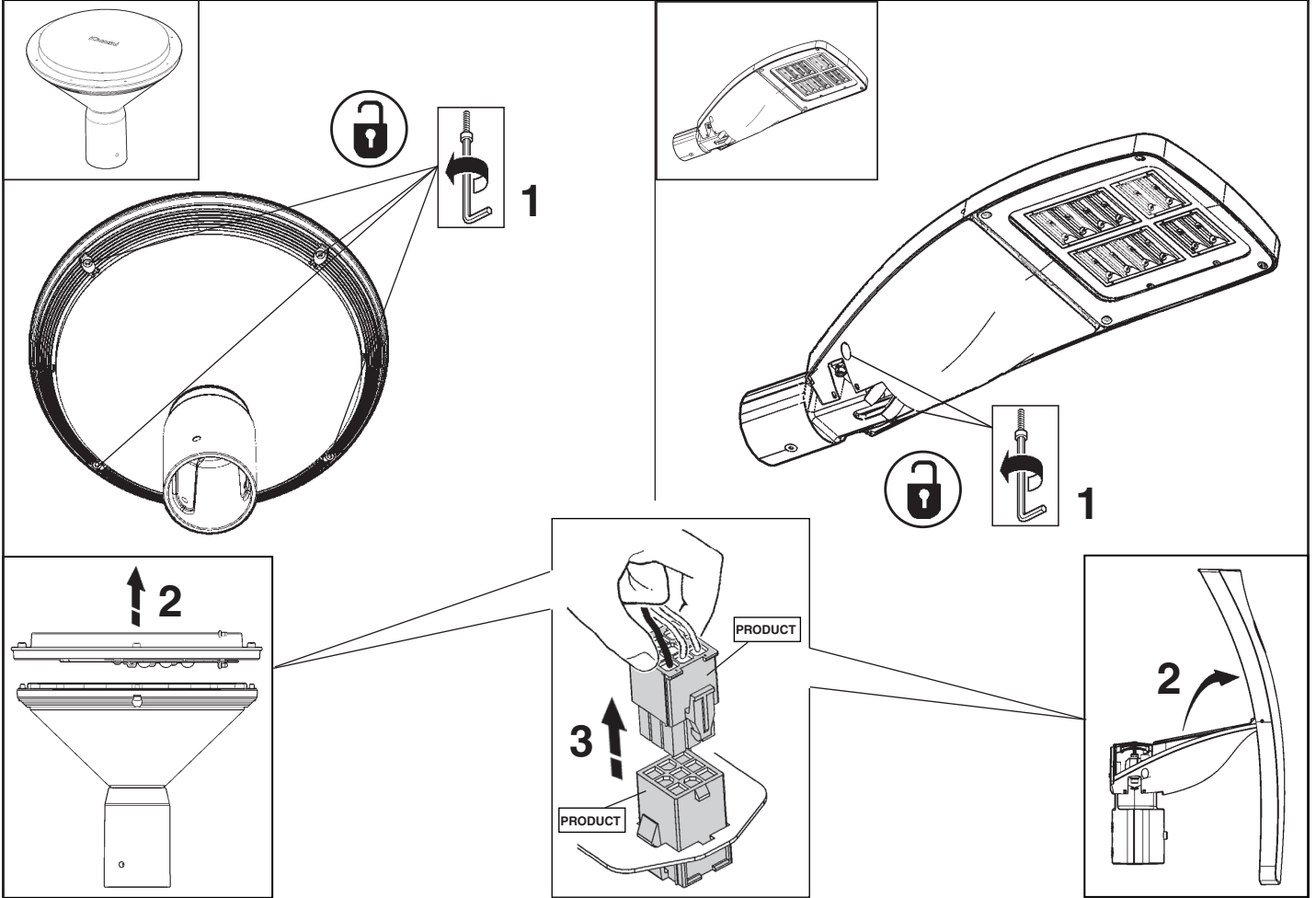
为确保该装置安全，请遵守操作指示；并于安全场所放置。



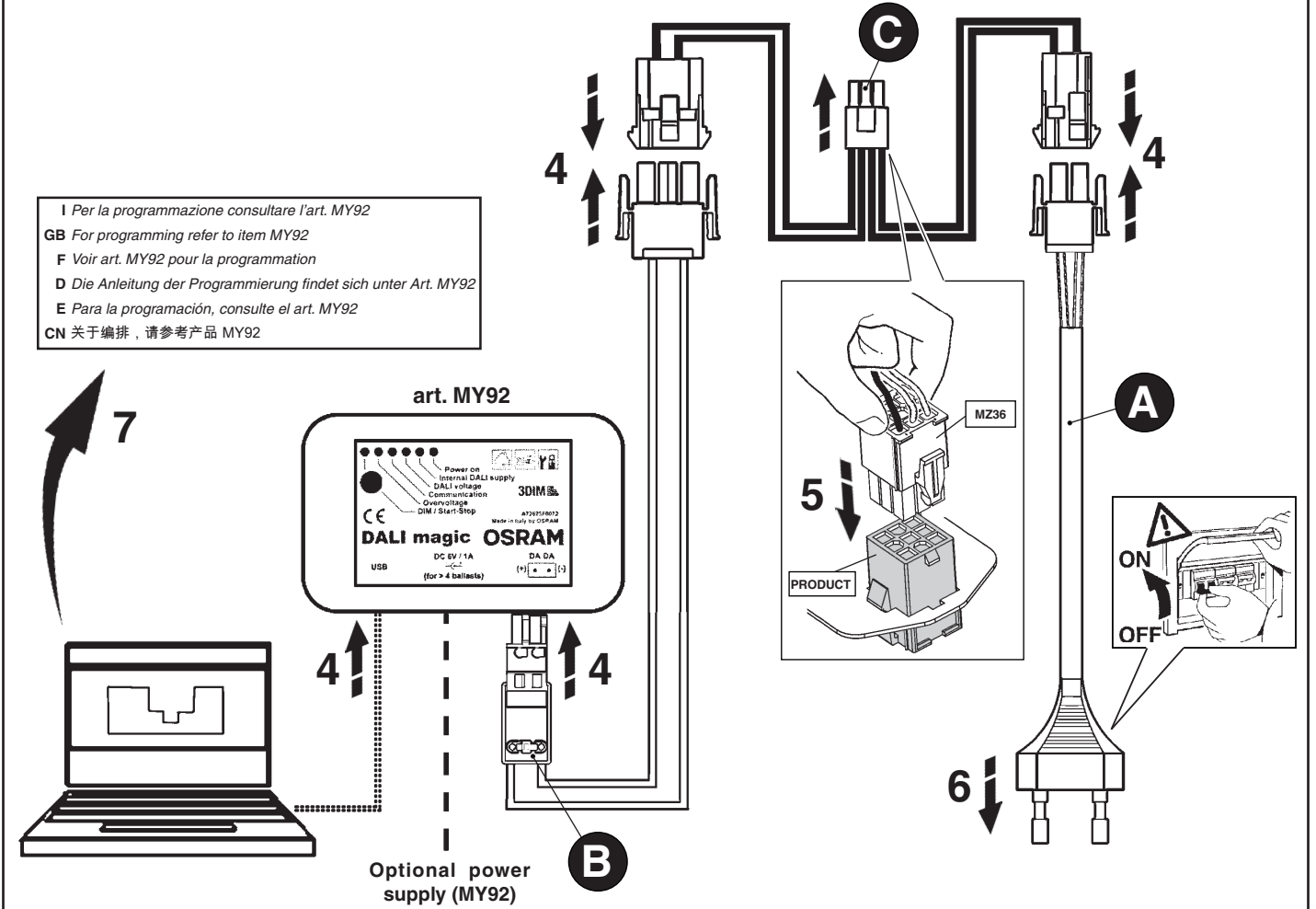
<p>A</p>	
<p>B</p>	
<p>C</p>	
<p>D</p>	

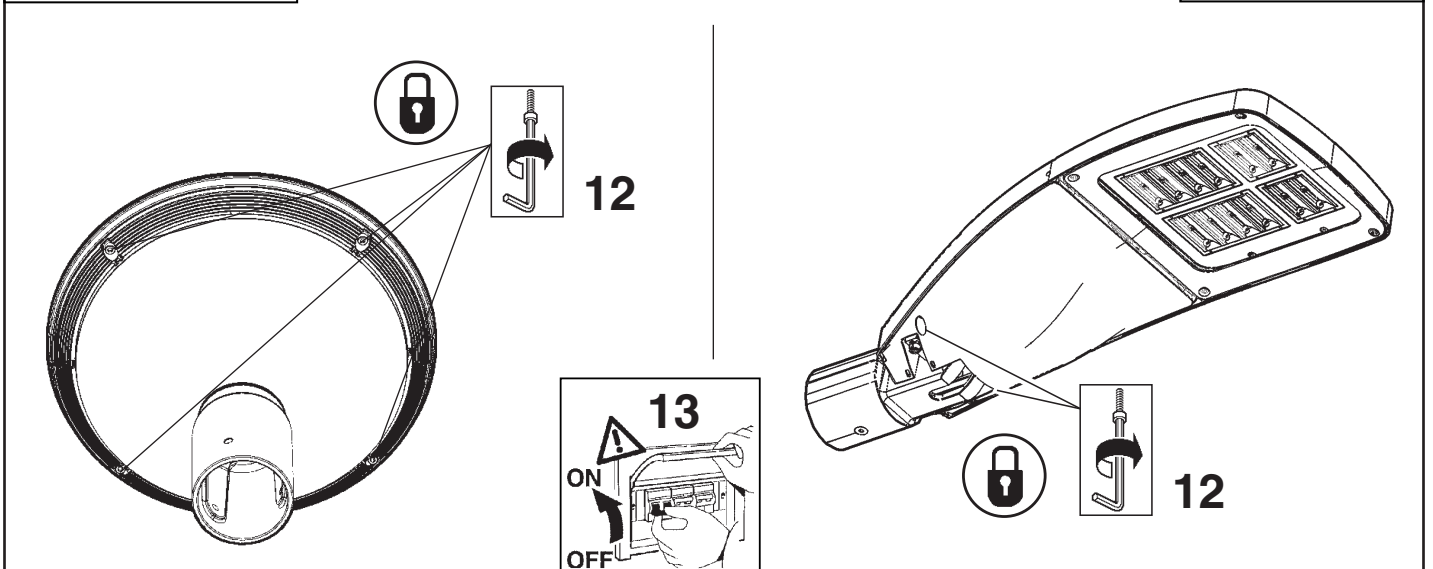
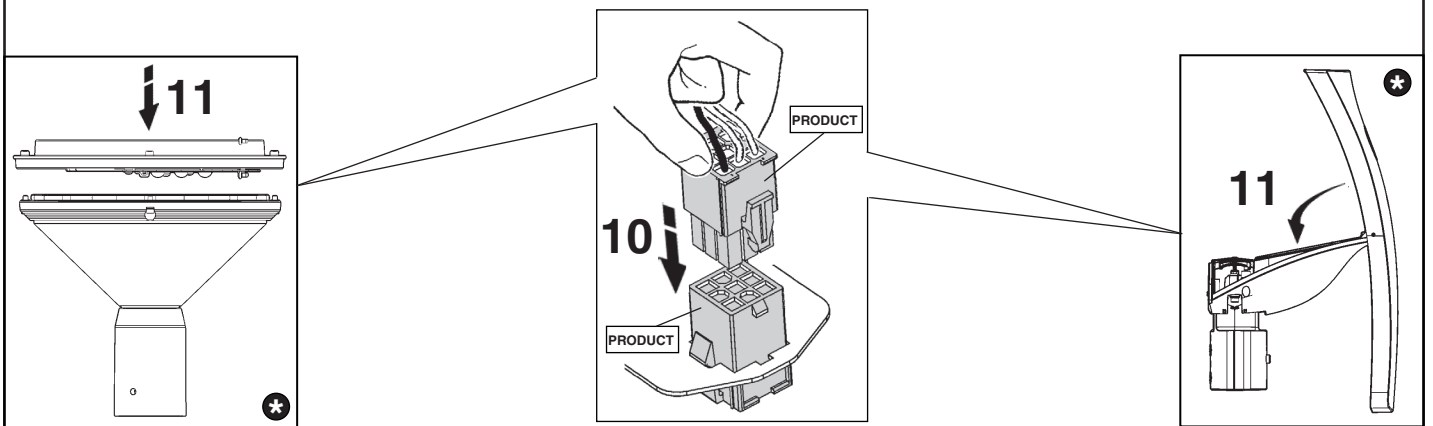
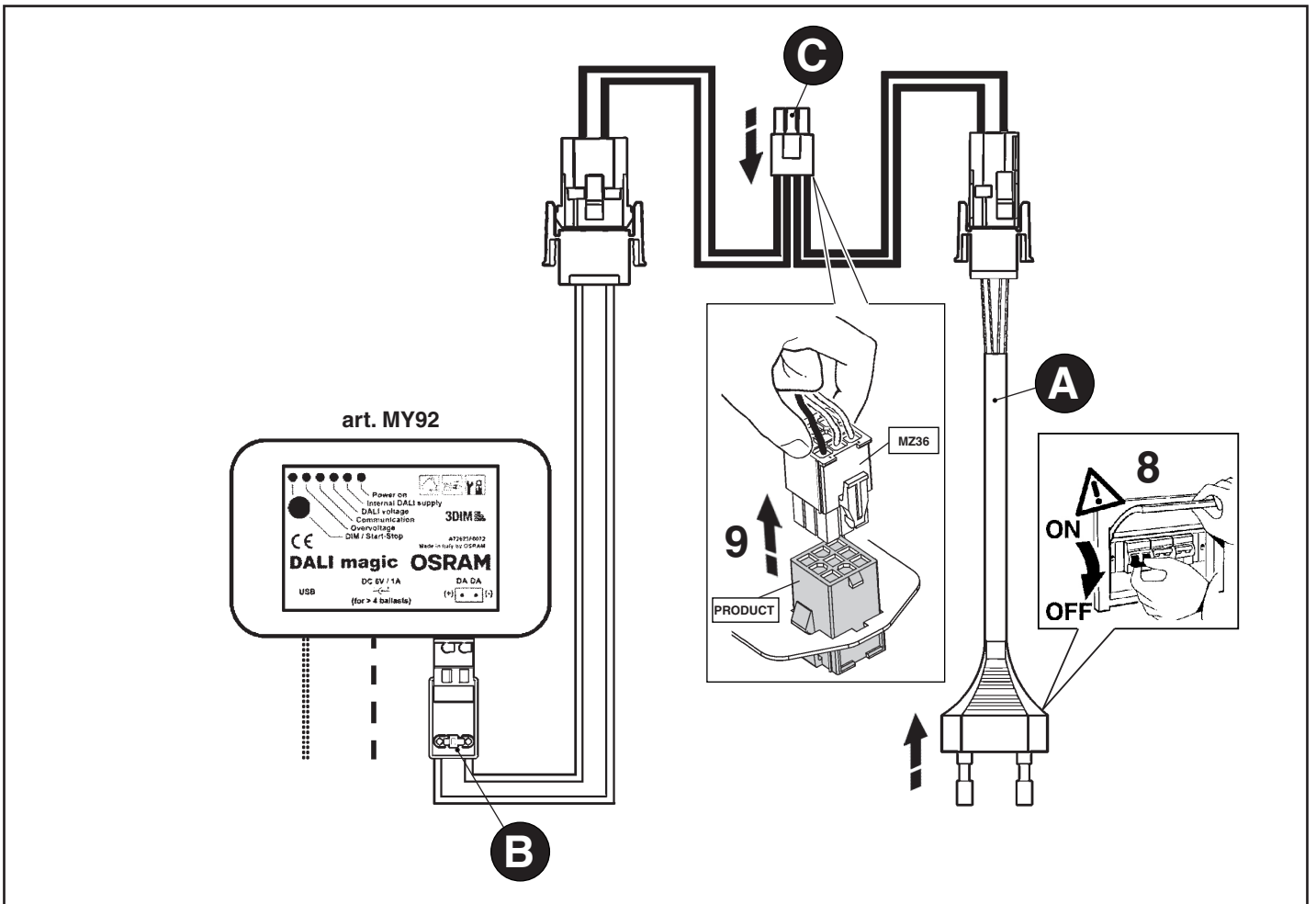
TWLIGHT

WOW MINI SMALL-LARGE HE-HO

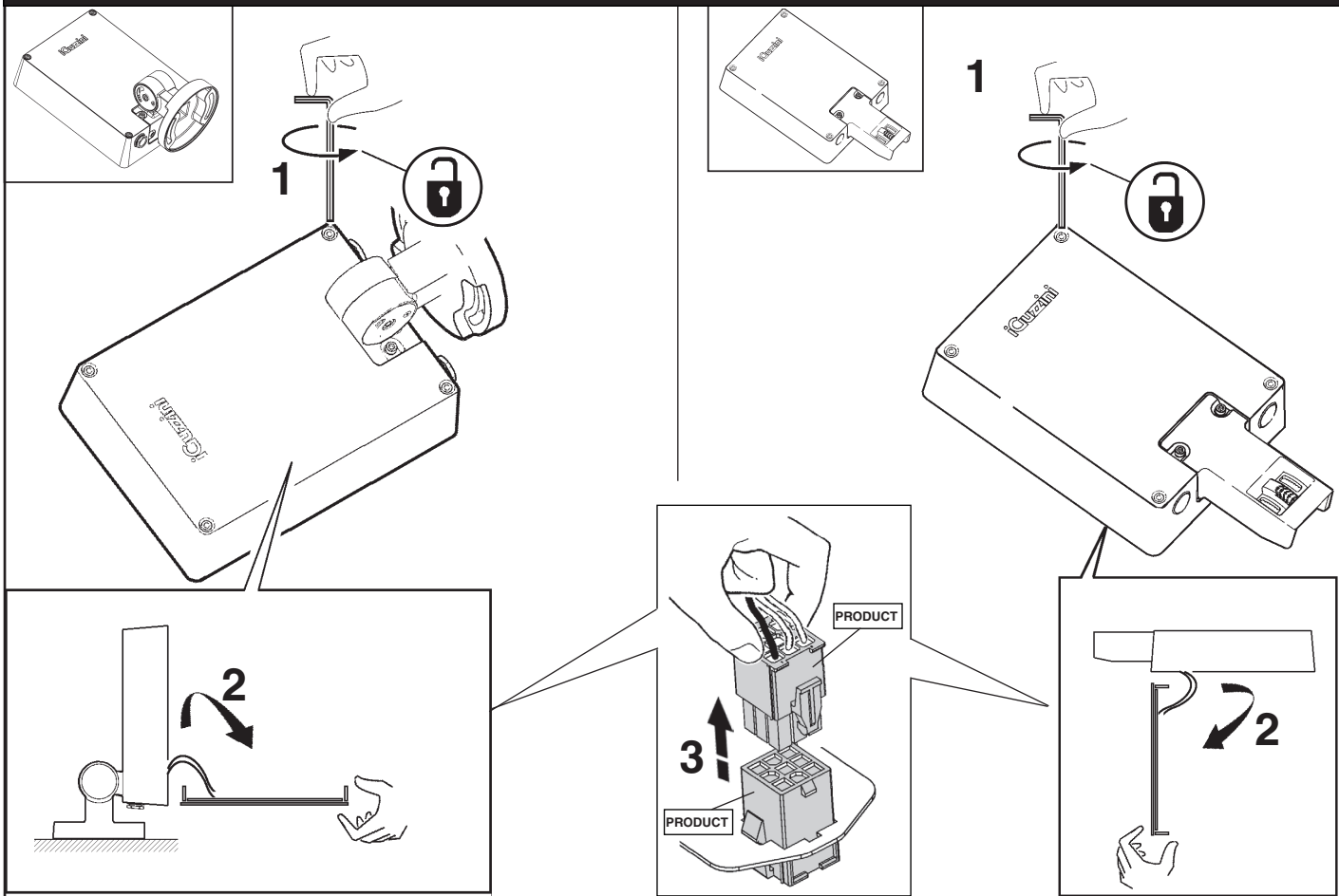


I Per la programmazione consultare l'art. MY92
 GB For programming refer to item MY92
 F Voir art. MY92 pour la programmation
 D Die Anleitung der Programmierung findet sich unter Art. MY92
 E Para la programación, consulte el art. MY92
 CN 关于编排, 请参考产品 MY92

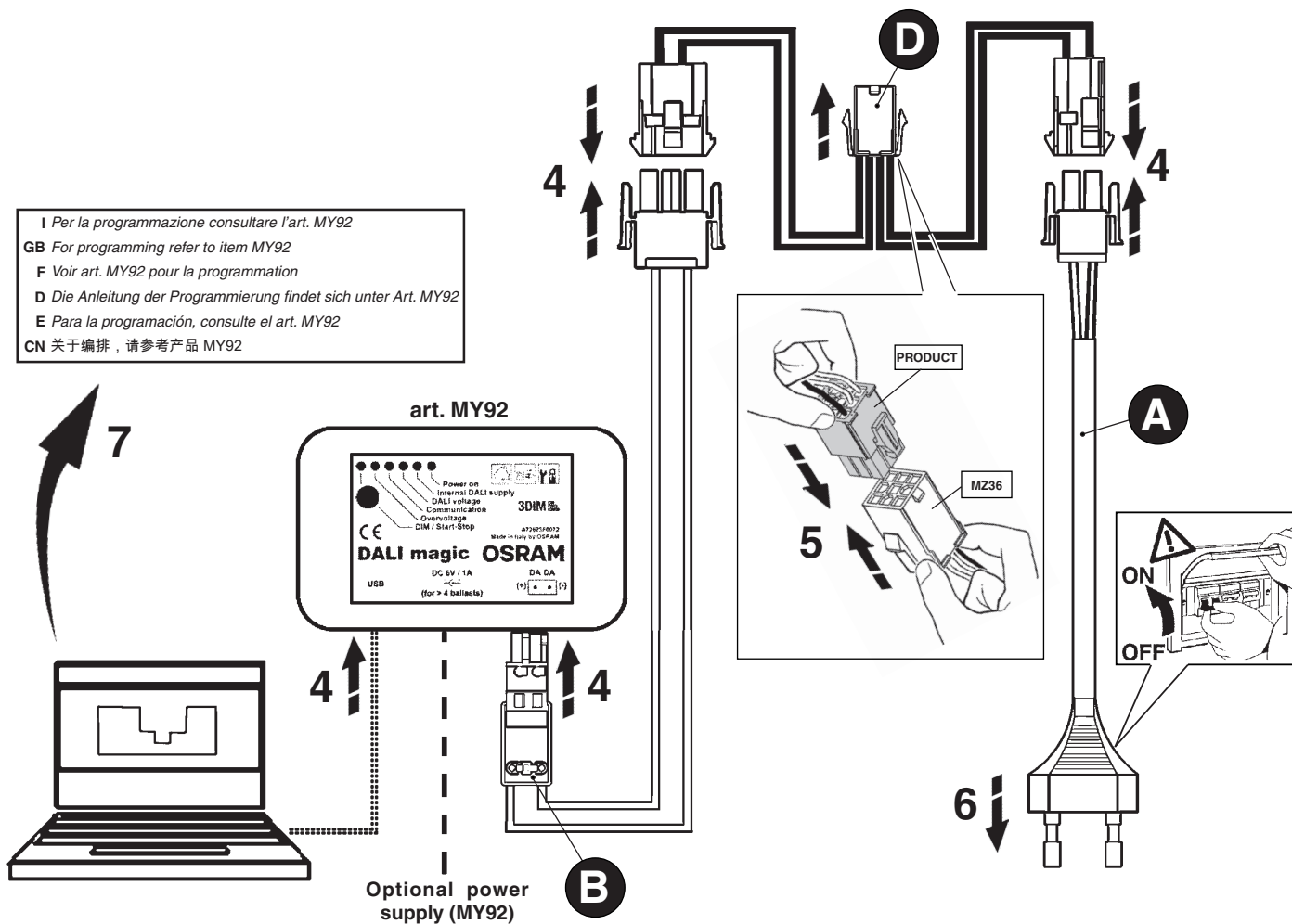


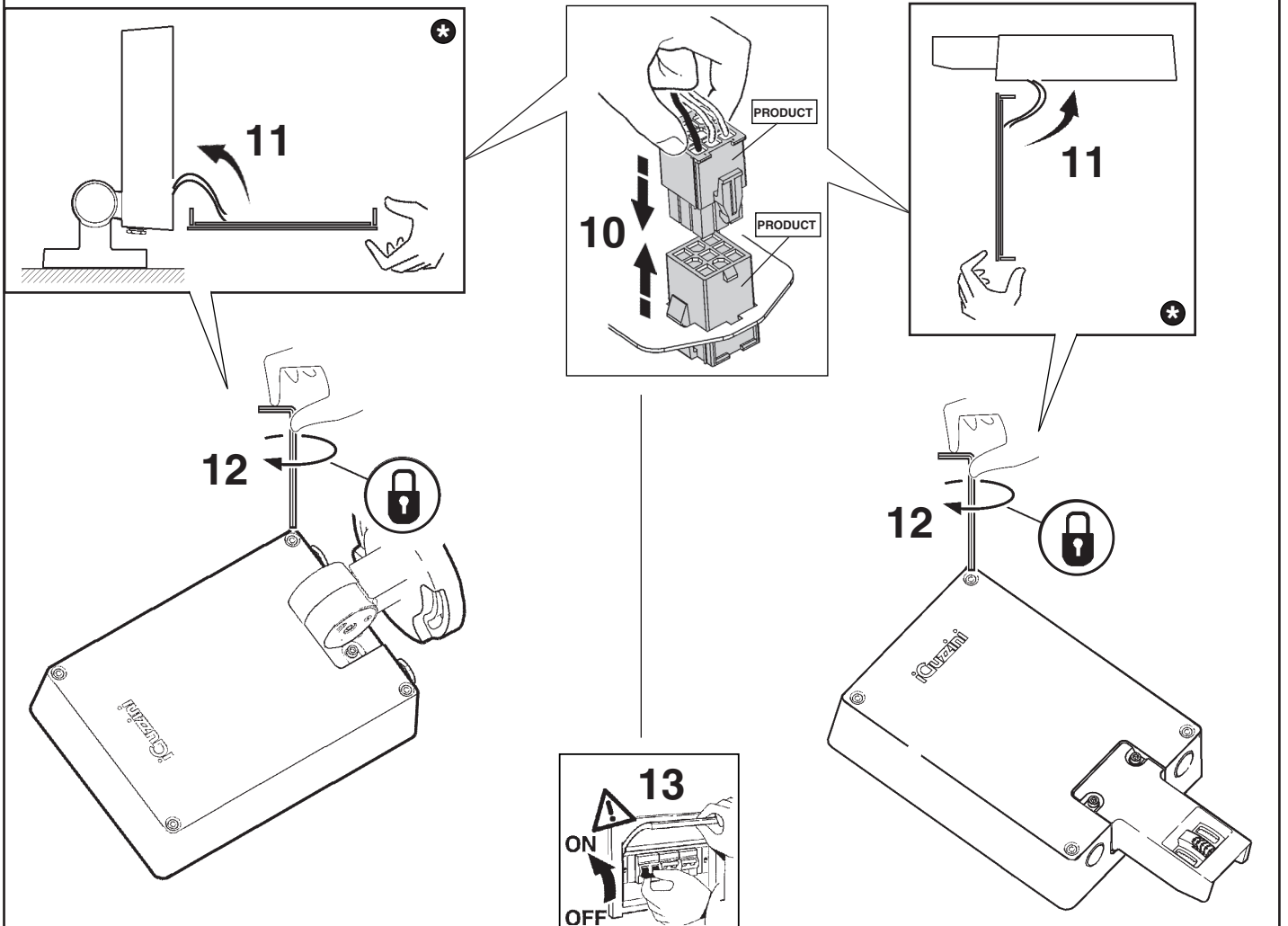
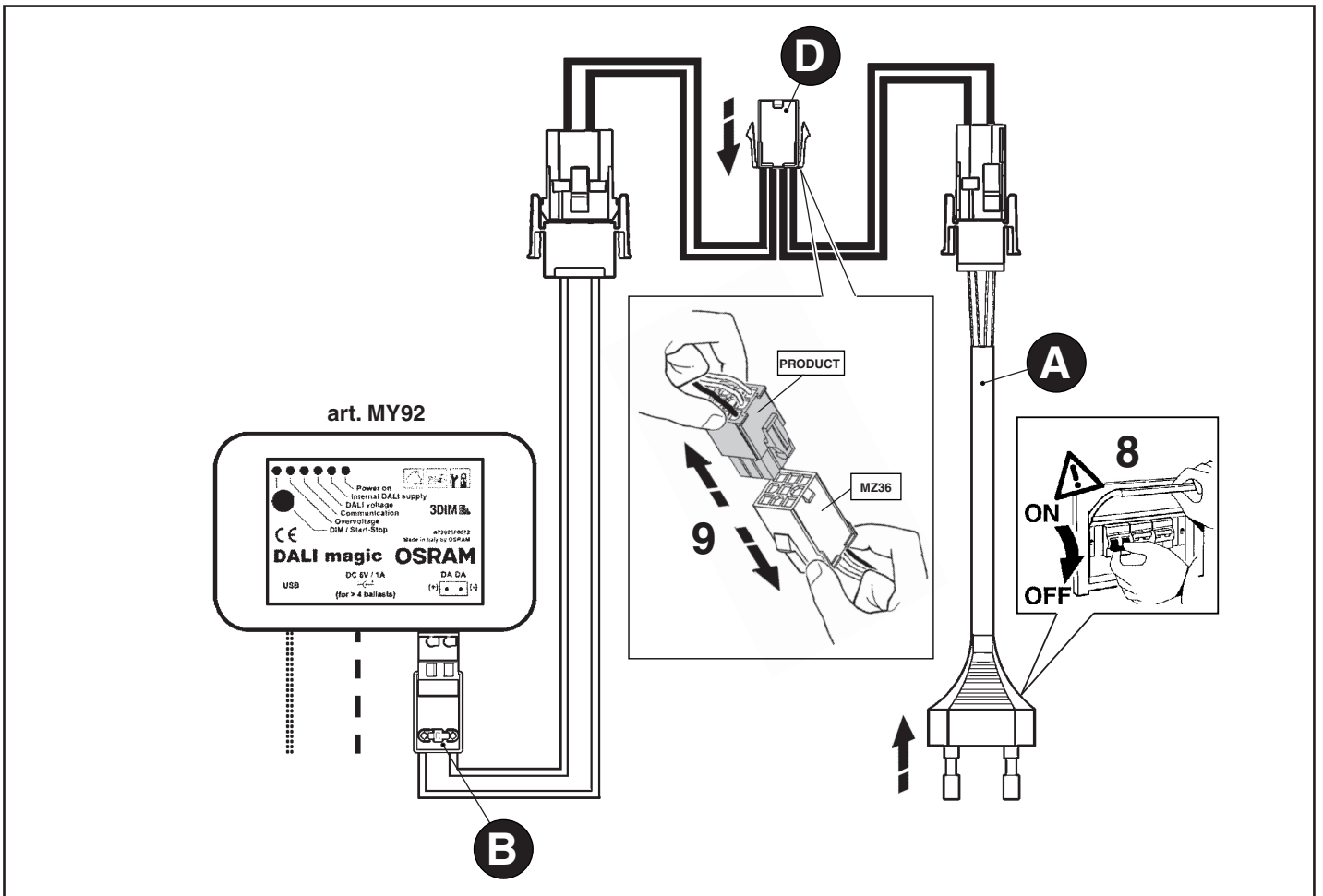


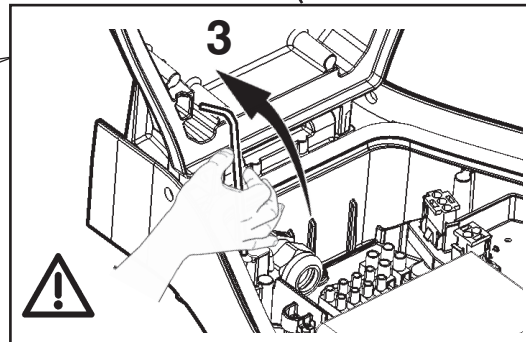
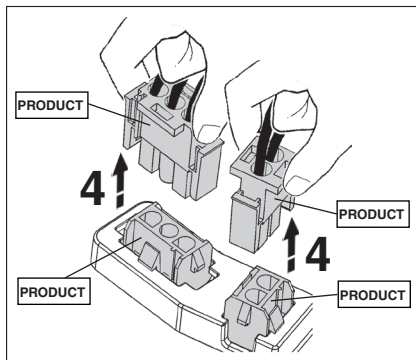
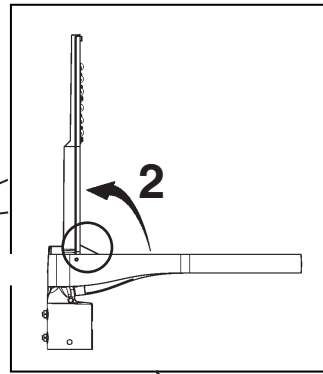
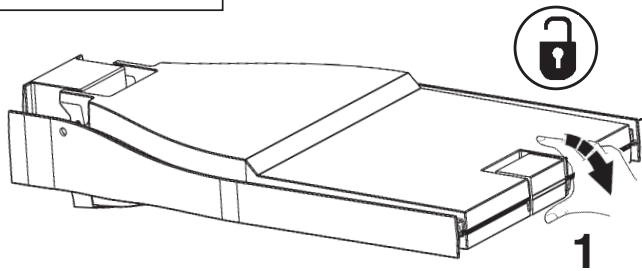
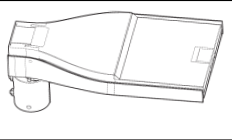
PLATEA PRO



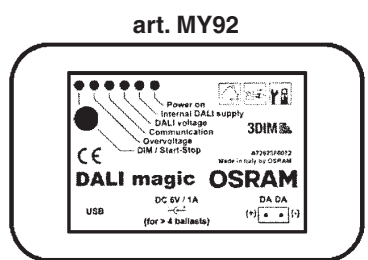
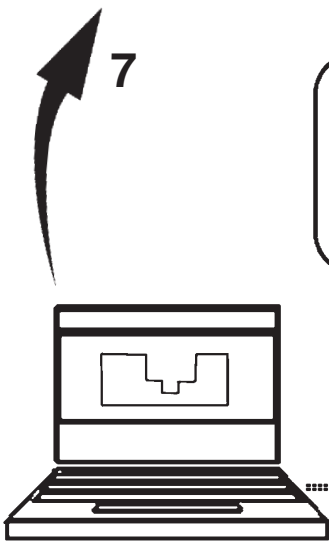
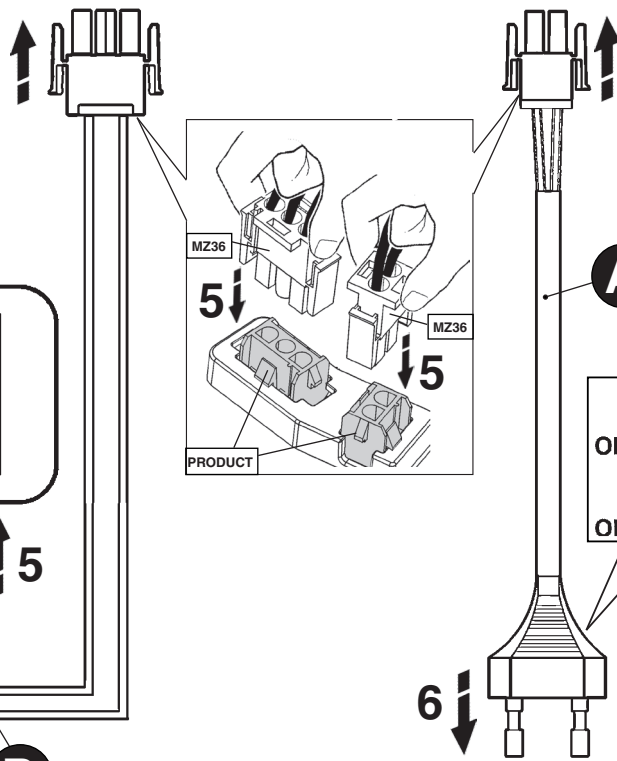
I Per la programmazione consultare l'art. MY92
 GB For programming refer to item MY92
 F Voir art. MY92 pour la programmation
 D Die Anleitung der Programmierung findet sich unter Art. MY92
 E Para la programación, consulte el art. MY92
 CN 关于编排, 请参考产品 MY92



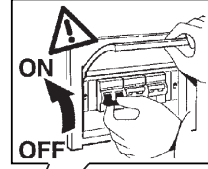


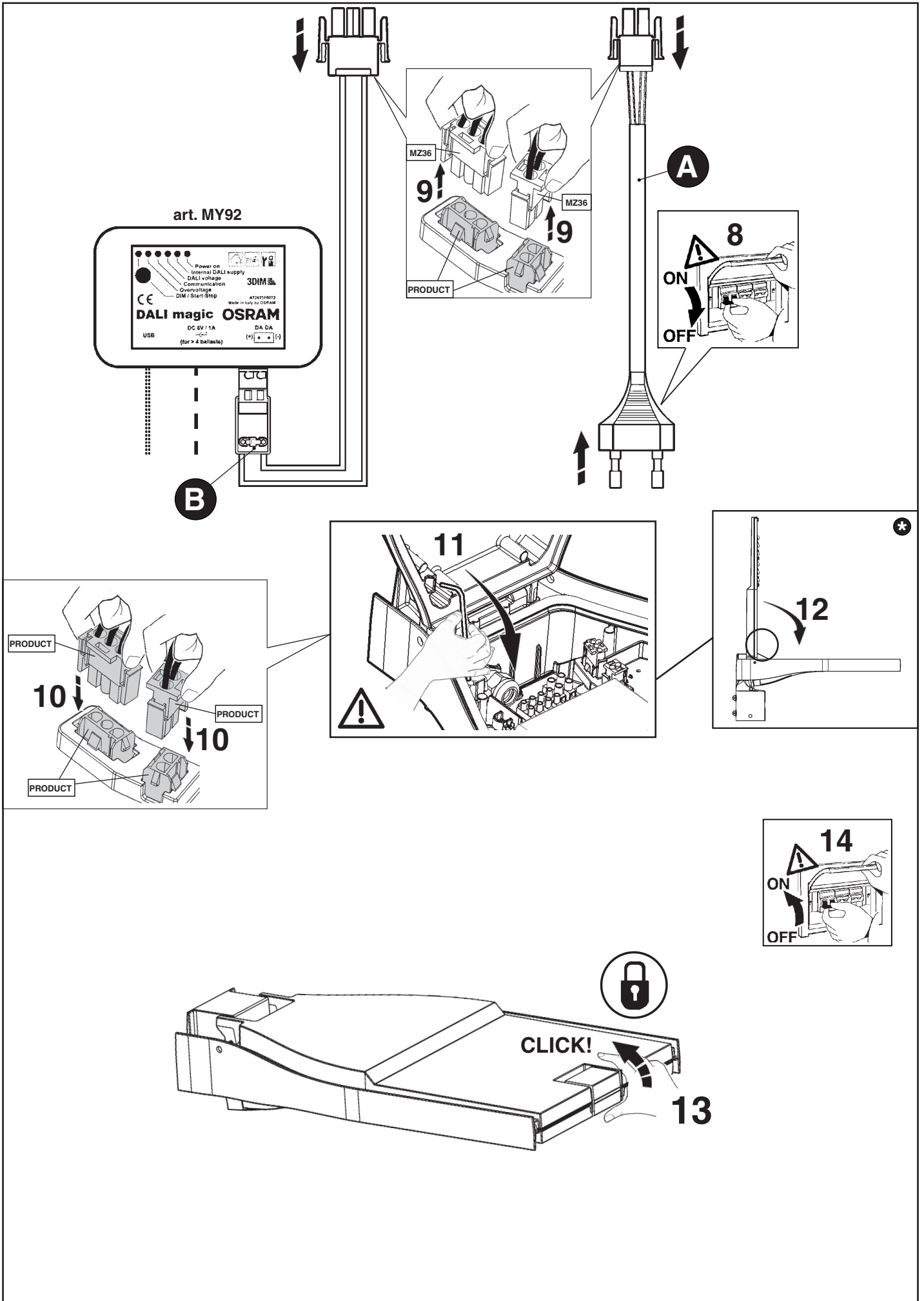


I Per la programmazione consultare l'art. MY92
 GB For programming refer to item MY92
 F Voir art. MY92 pour la programmation
 D Die Anleitung der Programmierung findet sich unter Art. MY92
 E Para la programación, consulte el art. MY92
 CN 关于编排, 请参考产品 MY92

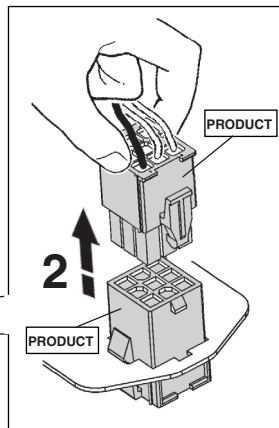
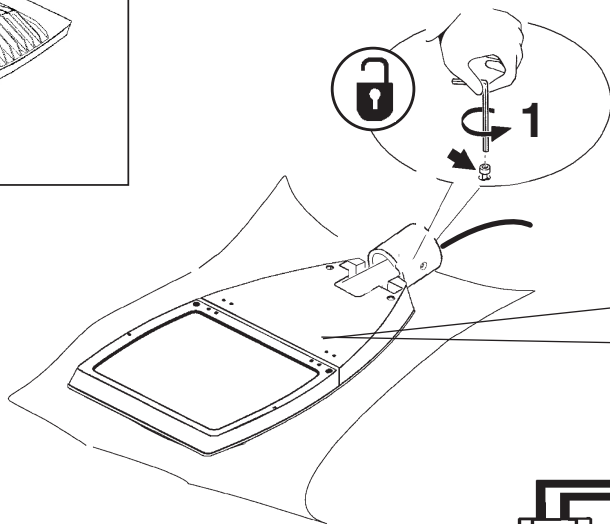
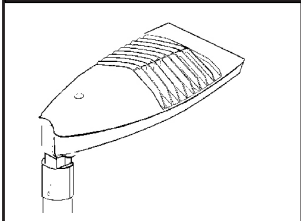


Optional power supply (MY92)

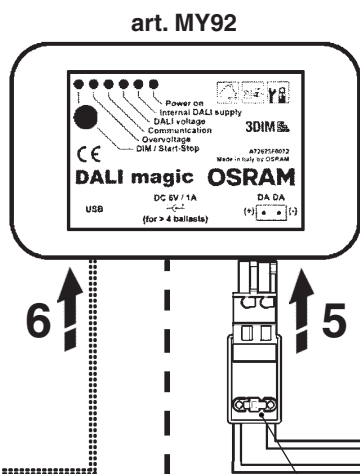
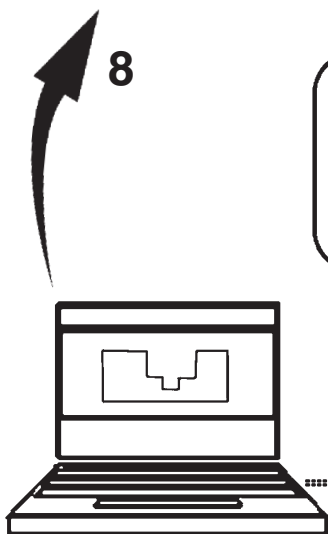
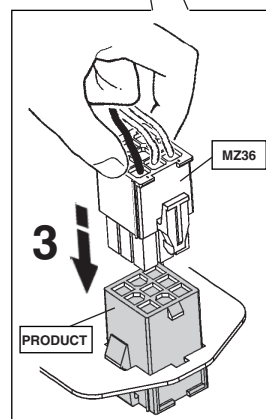
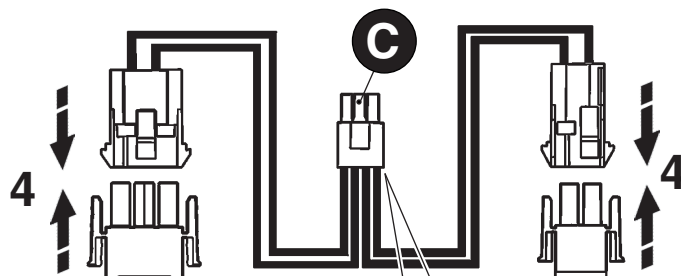




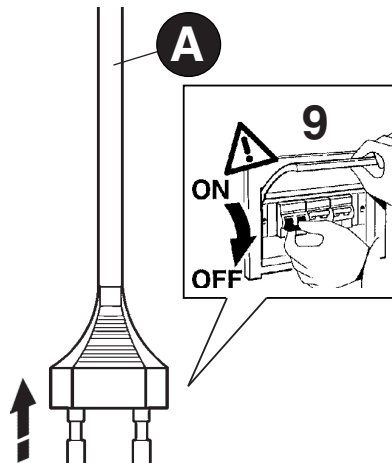
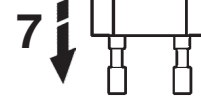
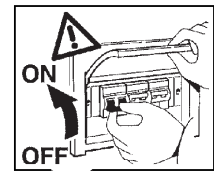
ARCHILEDE HP MINI

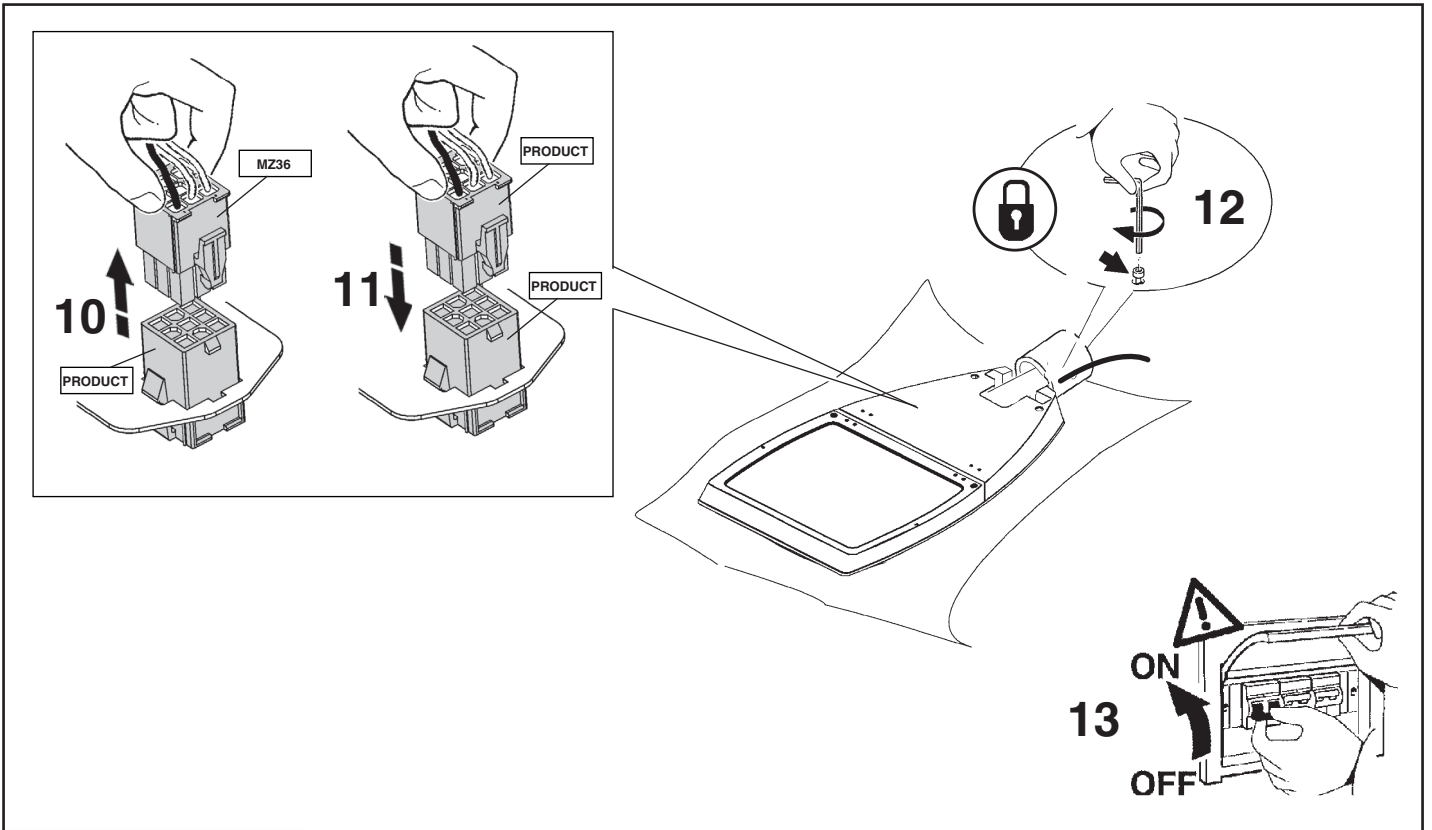


I Per la programmazione consultare l'art. MY92
 GB For programming refer to item MY92
 F Voir art. MY92 pour la programmation
 D Die Anleitung der Programmierung findet sich unter Art. MY92
 E Para la programación, consulte el art. MY92
 CN 关于编排, 请参考产品 MY92

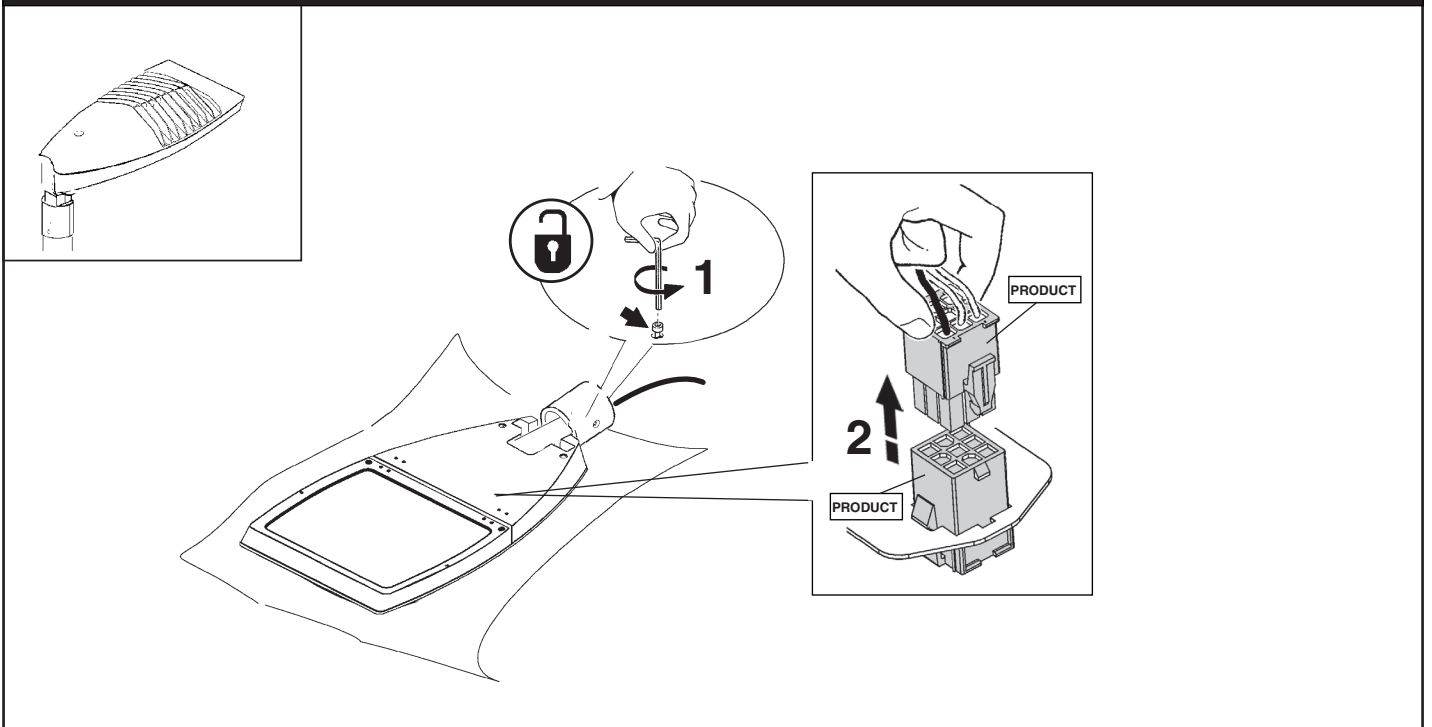


Optional power supply (MY92)

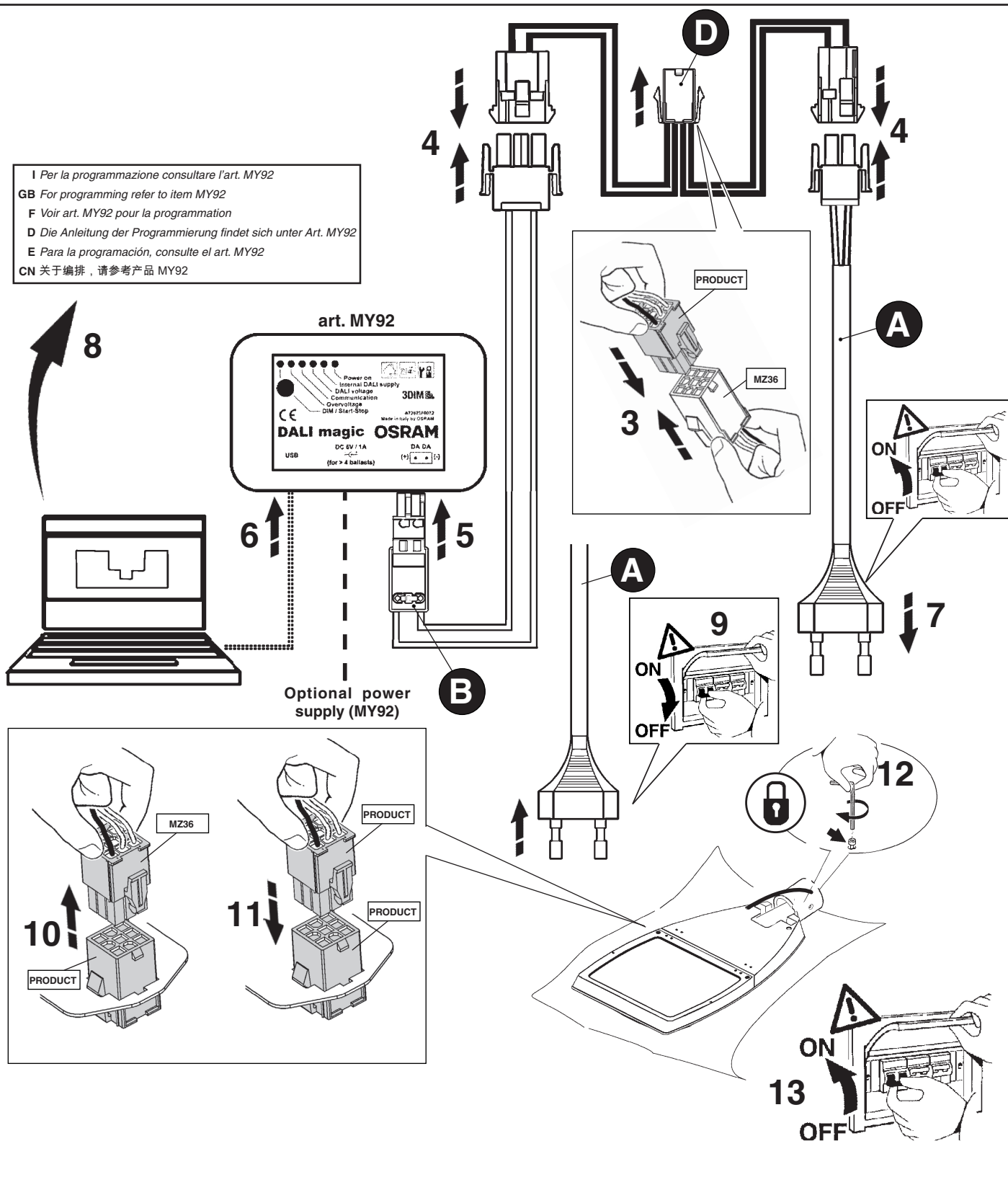


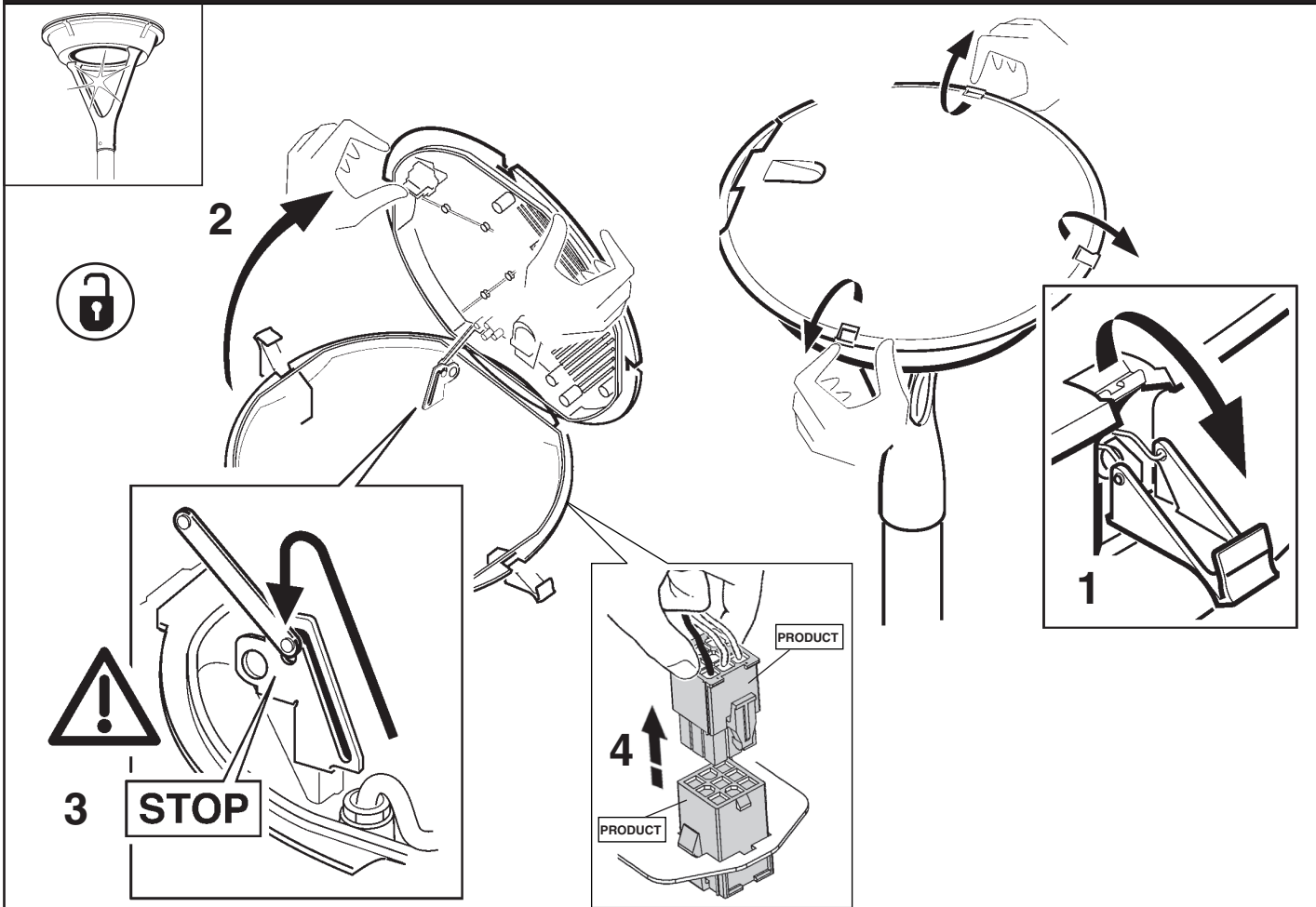


ARCHILEDE HP

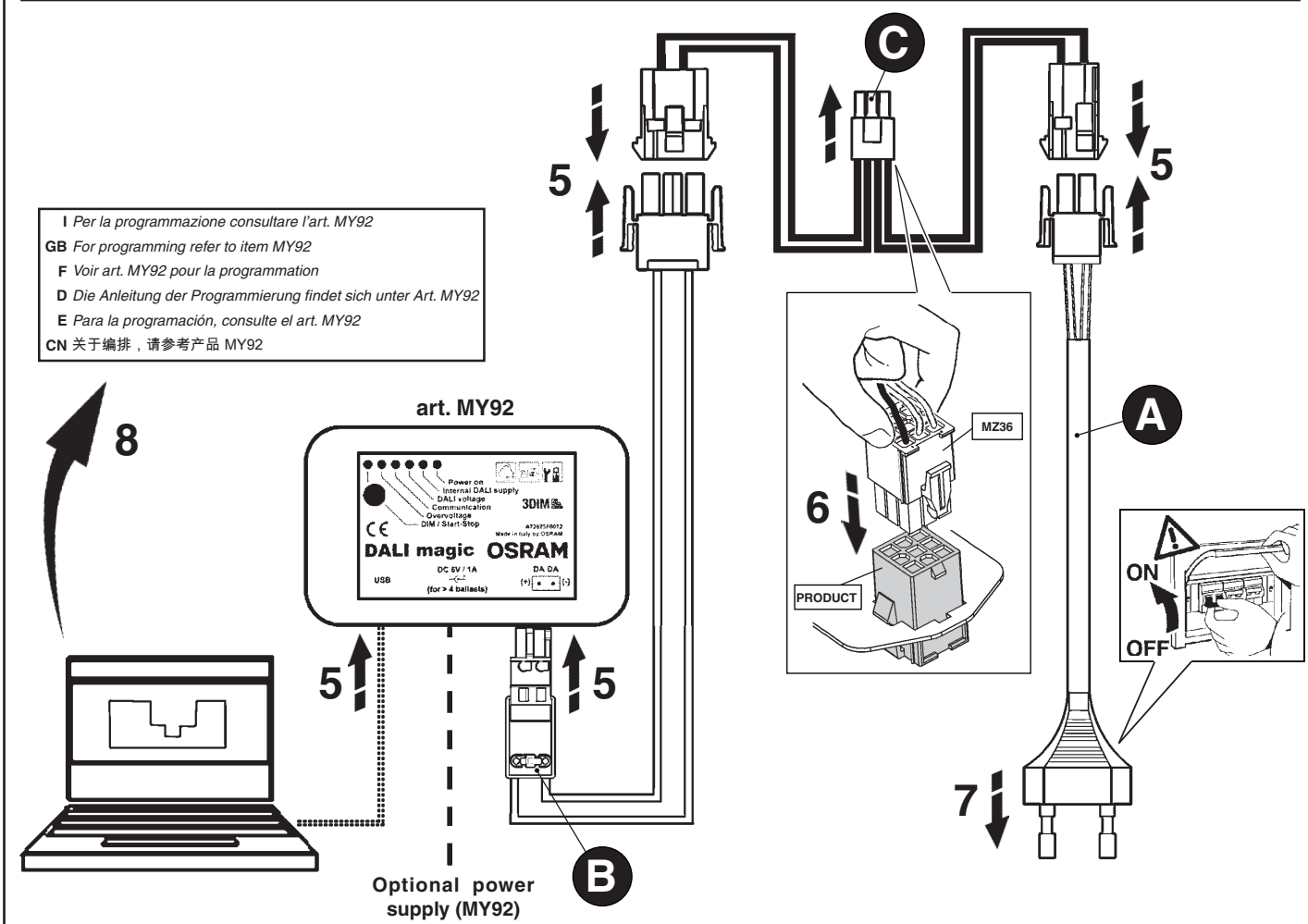


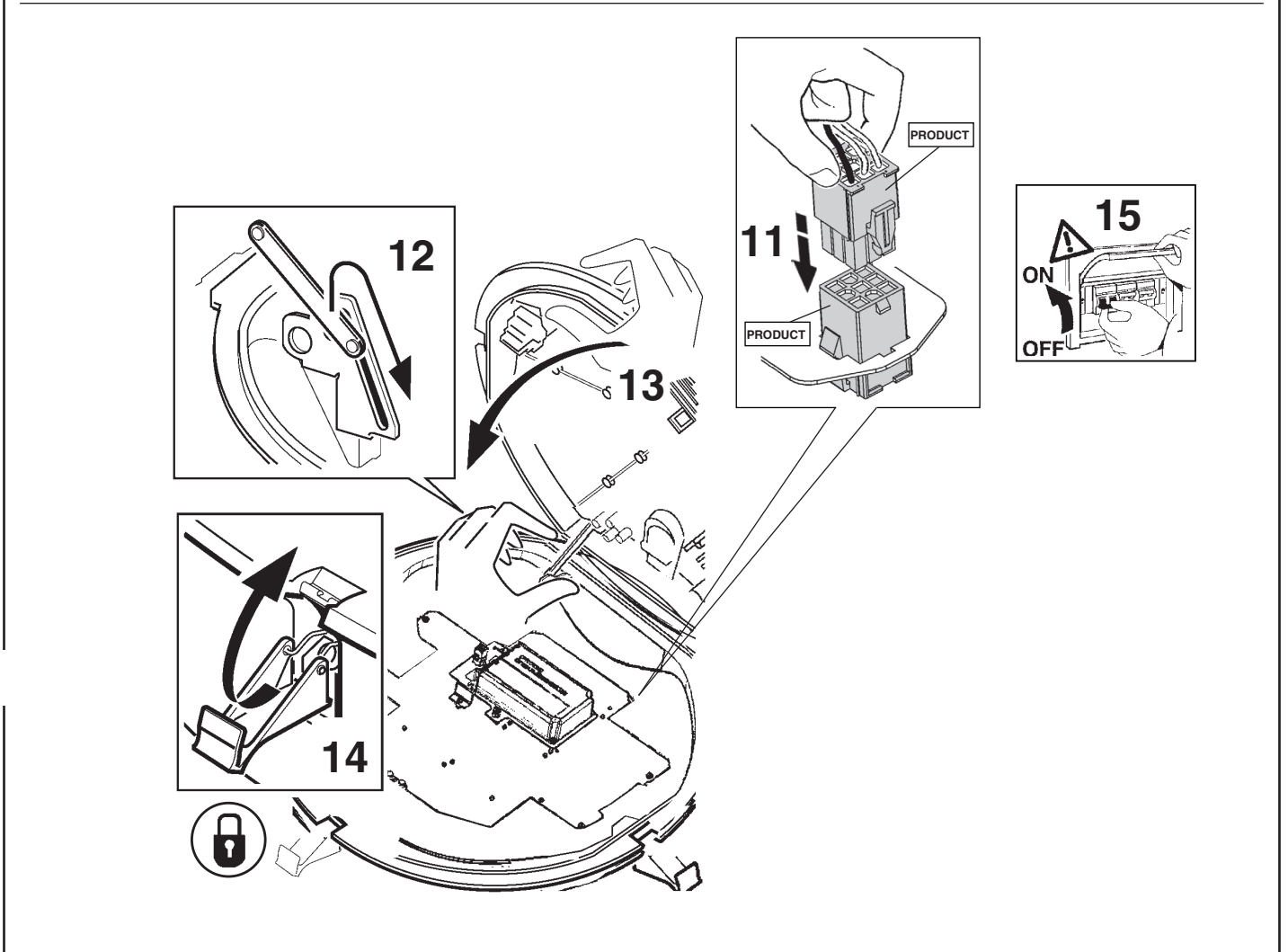
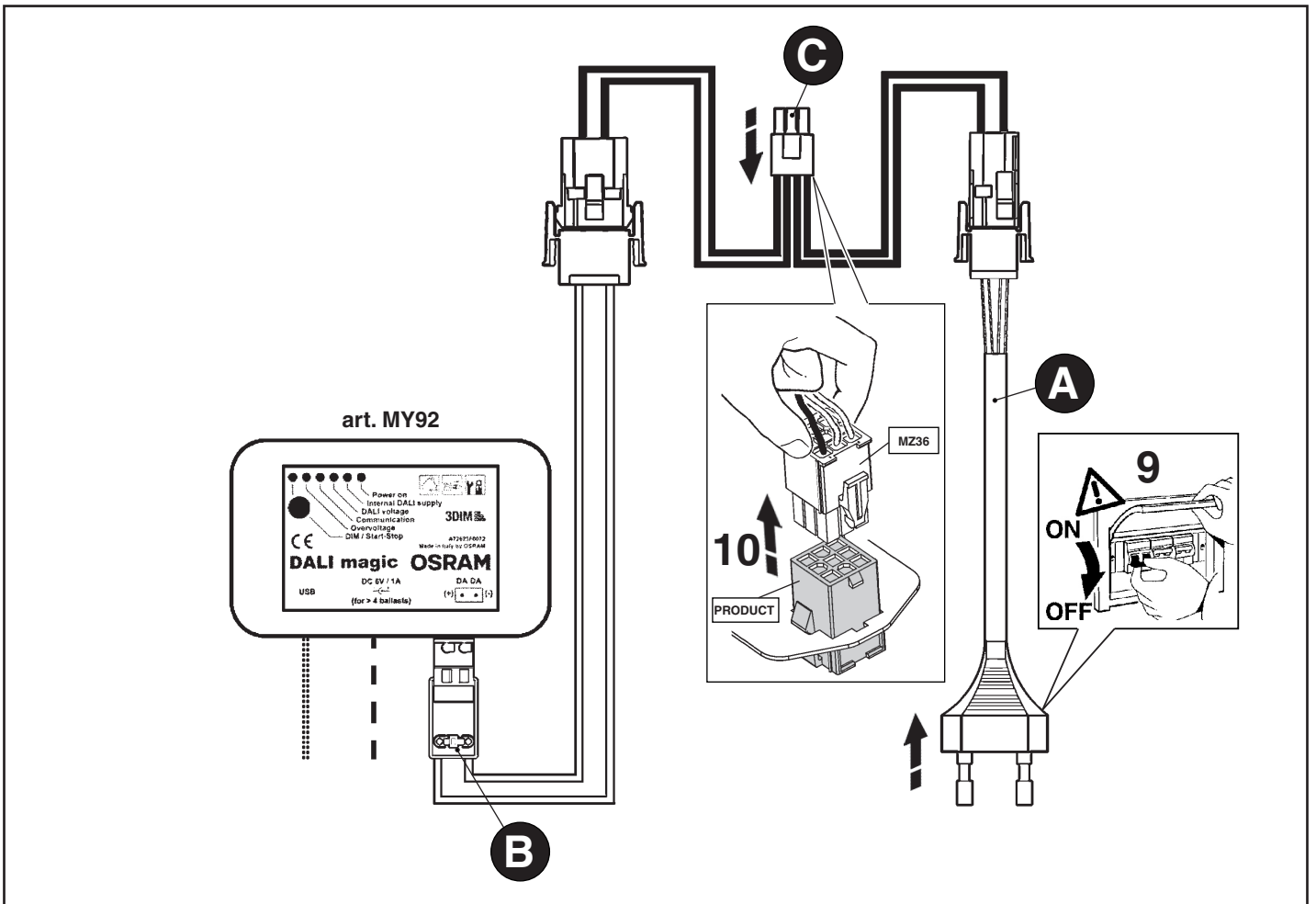
I Per la programmazione consultare l'art. MY92
 GB For programming refer to item MY92
 F Voir art. MY92 pour la programmation
 D Die Anleitung der Programmierung findet sich unter Art. MY92
 E Para la programación, consulte el art. MY92
 CN 关于编排, 请参考产品 MY92

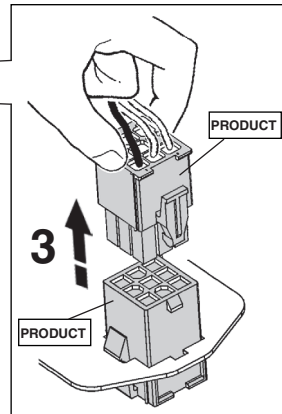
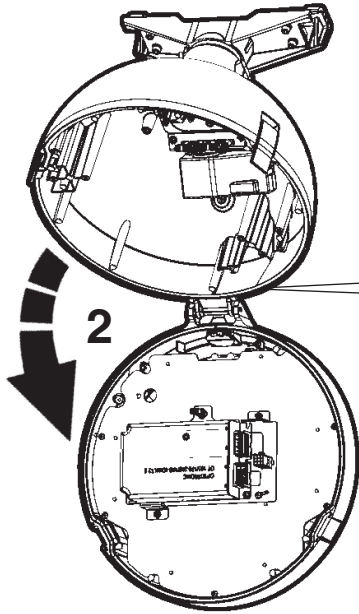
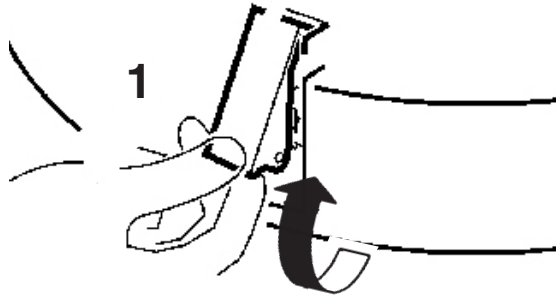
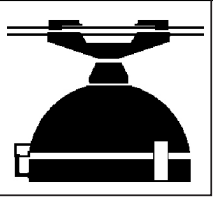




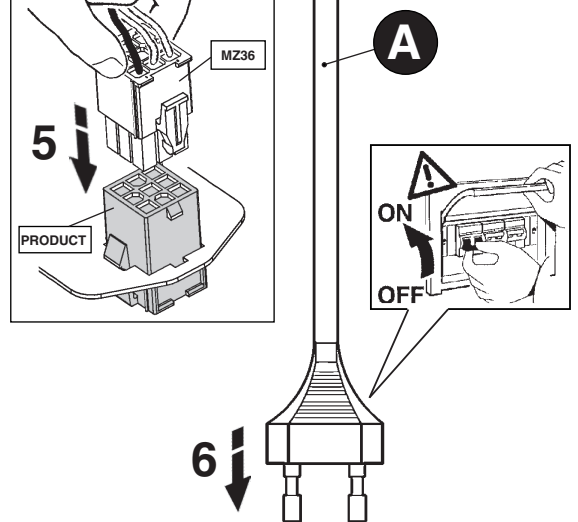
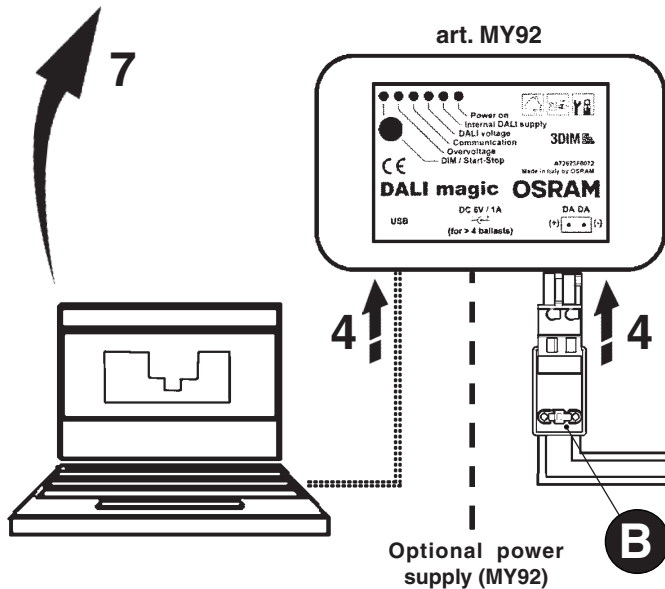
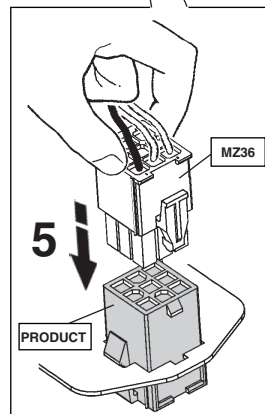
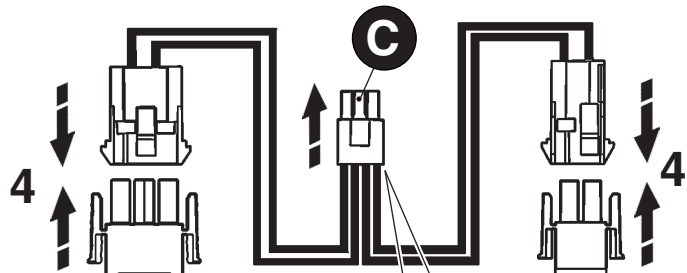
I Per la programmazione consultare l'art. MY92
 GB For programming refer to item MY92
 F Voir art. MY92 pour la programmation
 D Die Anleitung der Programmierung findet sich unter Art. MY92
 E Para la programación, consulte el art. MY92
 CN 关于编排, 请参考产品 MY92

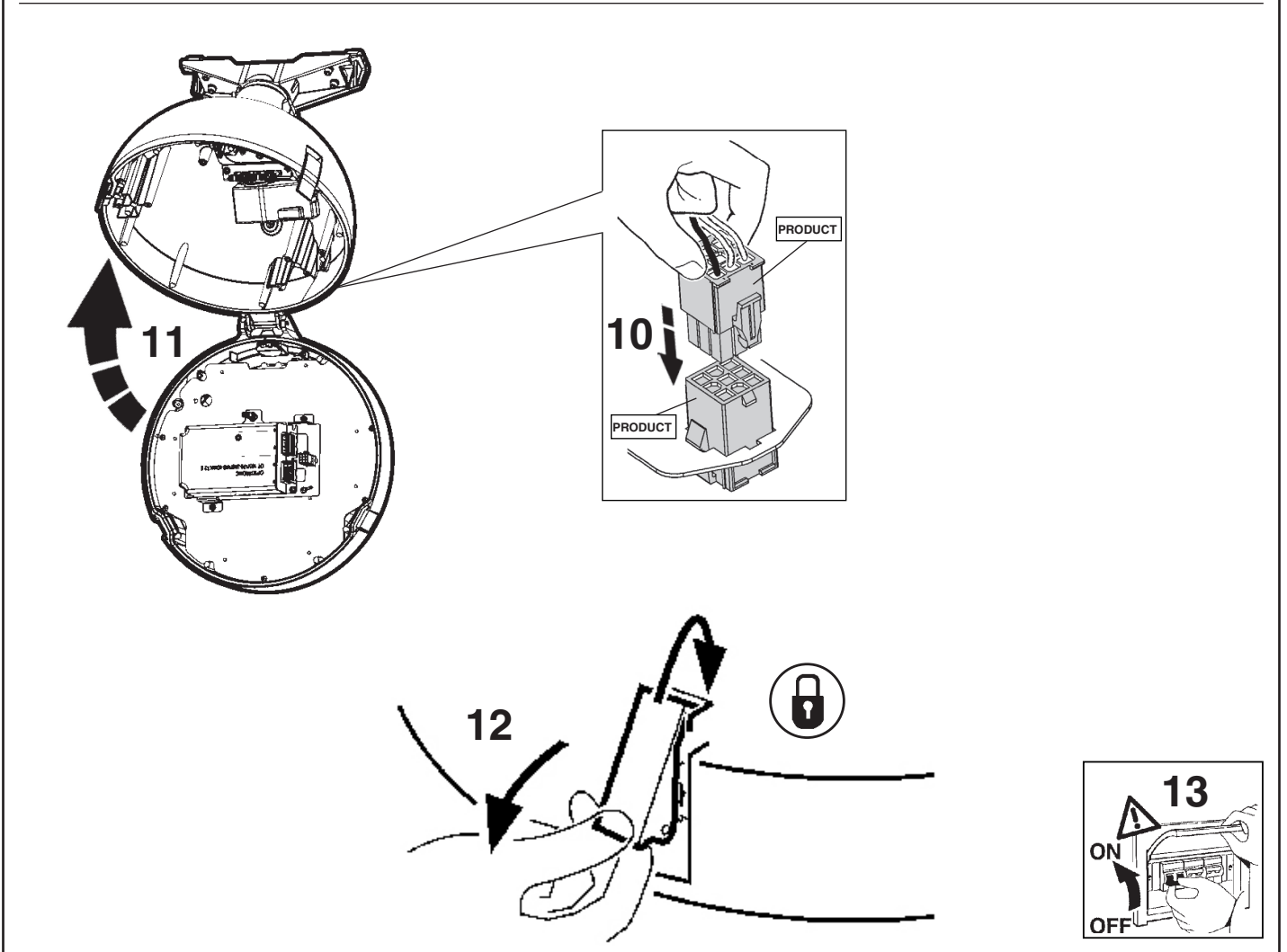
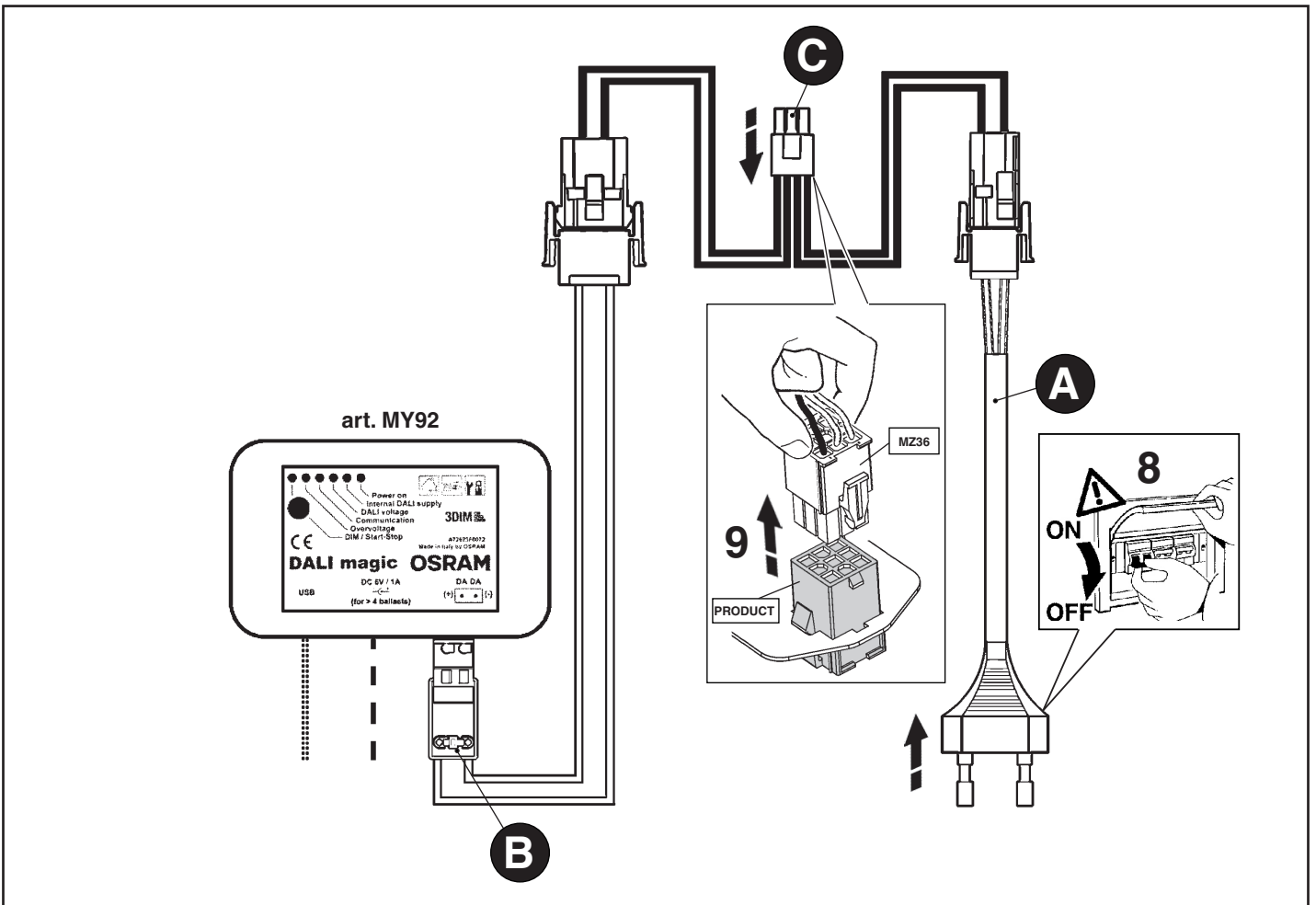


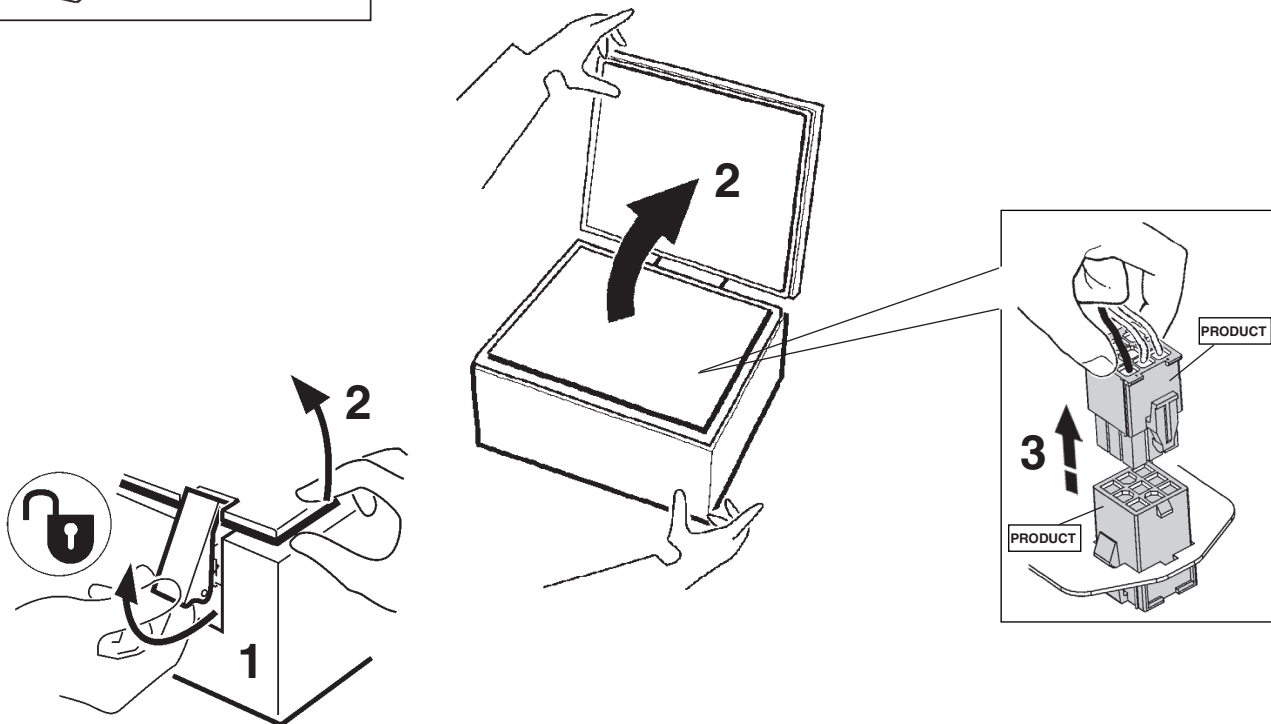
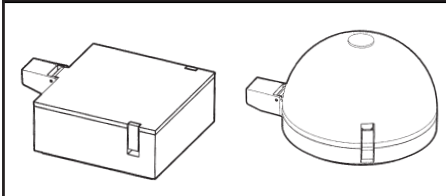




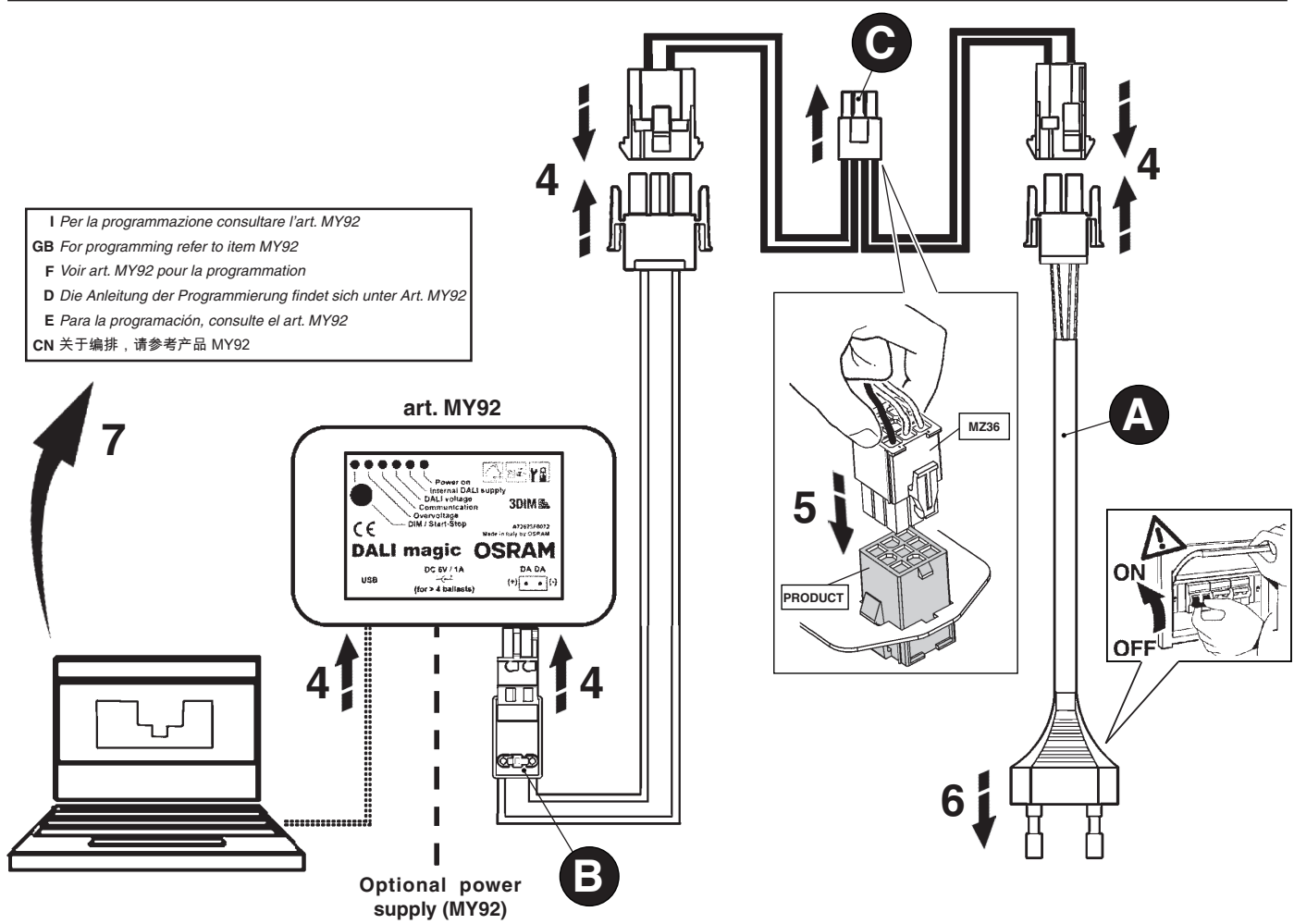
I Per la programmazione consultare l'art. MY92
 GB For programming refer to item MY92
 F Voir art. MY92 pour la programmation
 D Die Anleitung der Programmierung findet sich unter Art. MY92
 E Para la programación, consulte el art. MY92
 CN 关于编排, 请参考产品 MY92

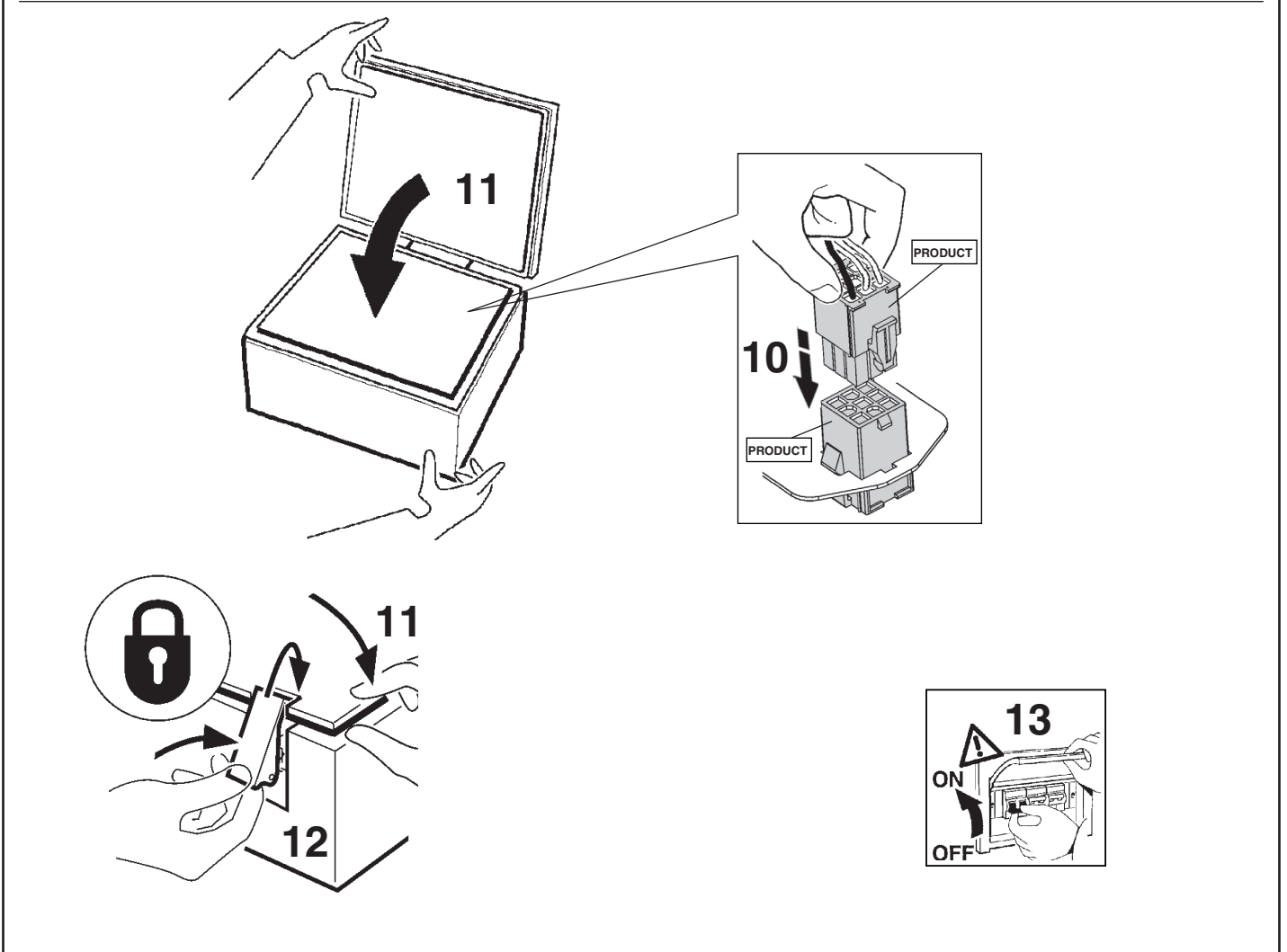
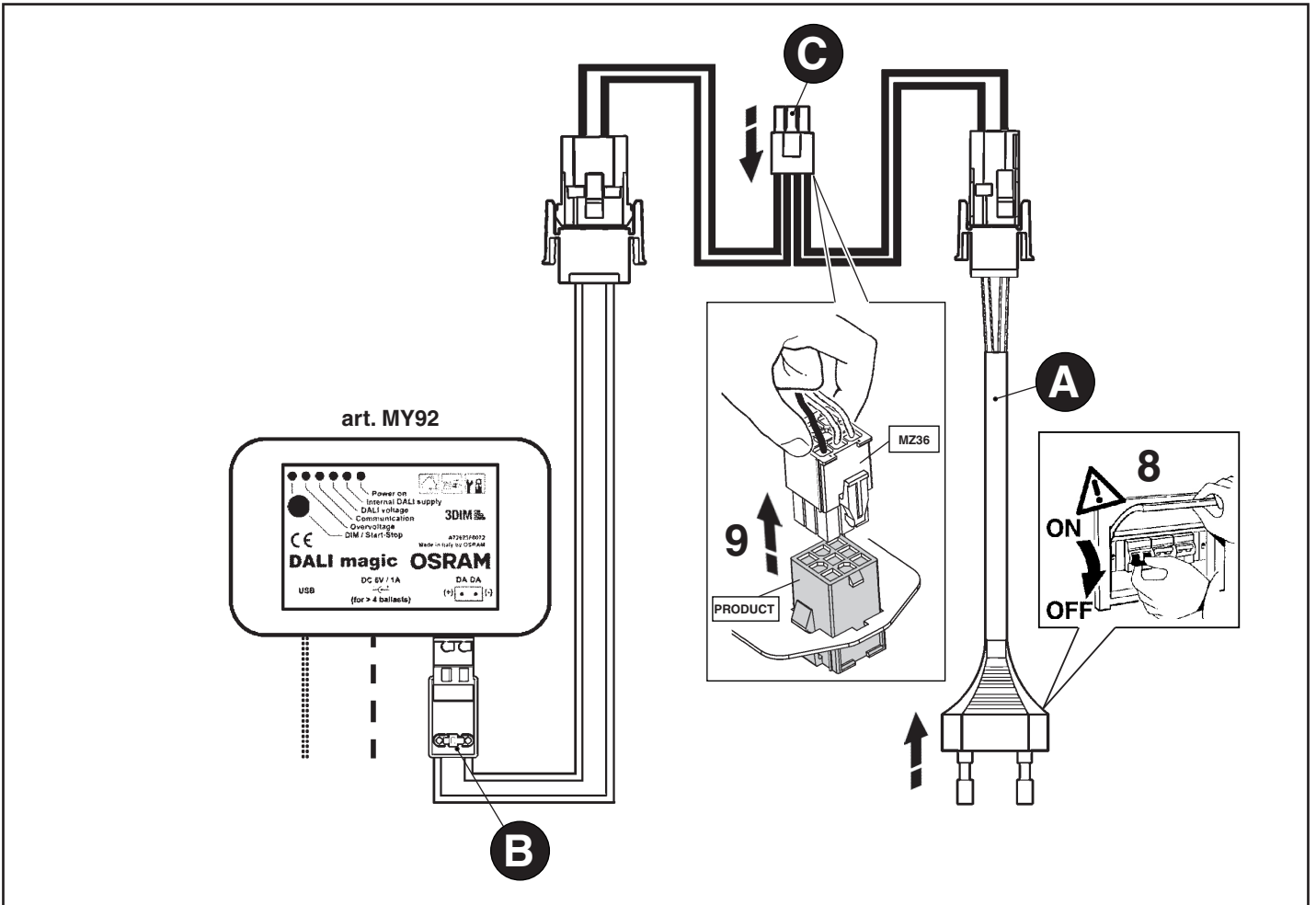


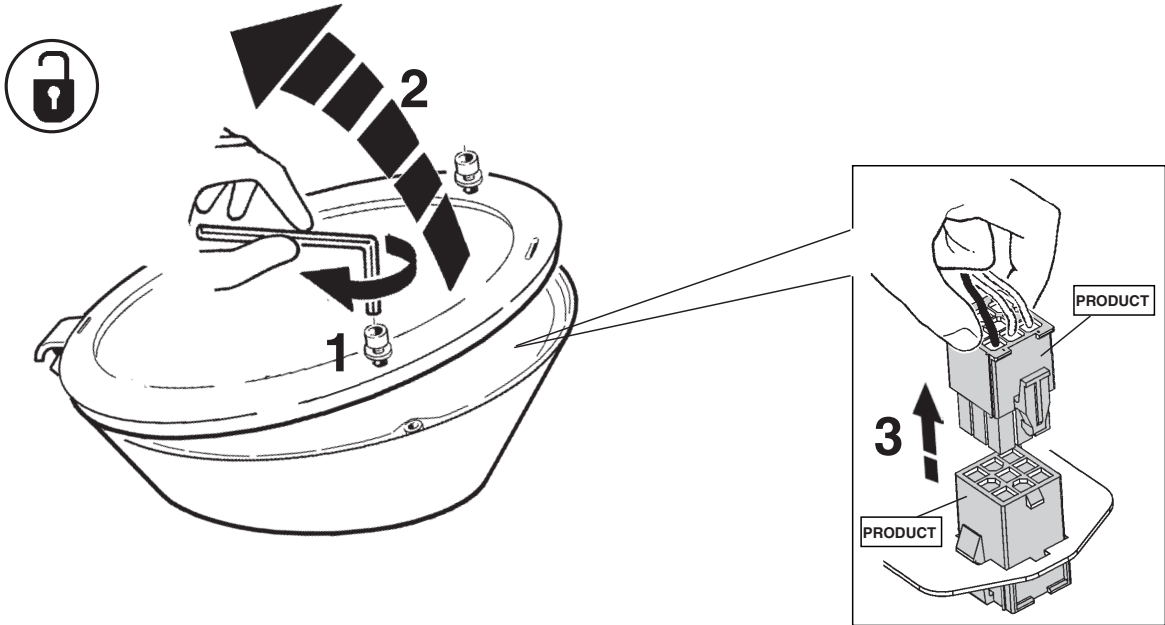
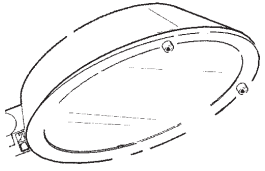




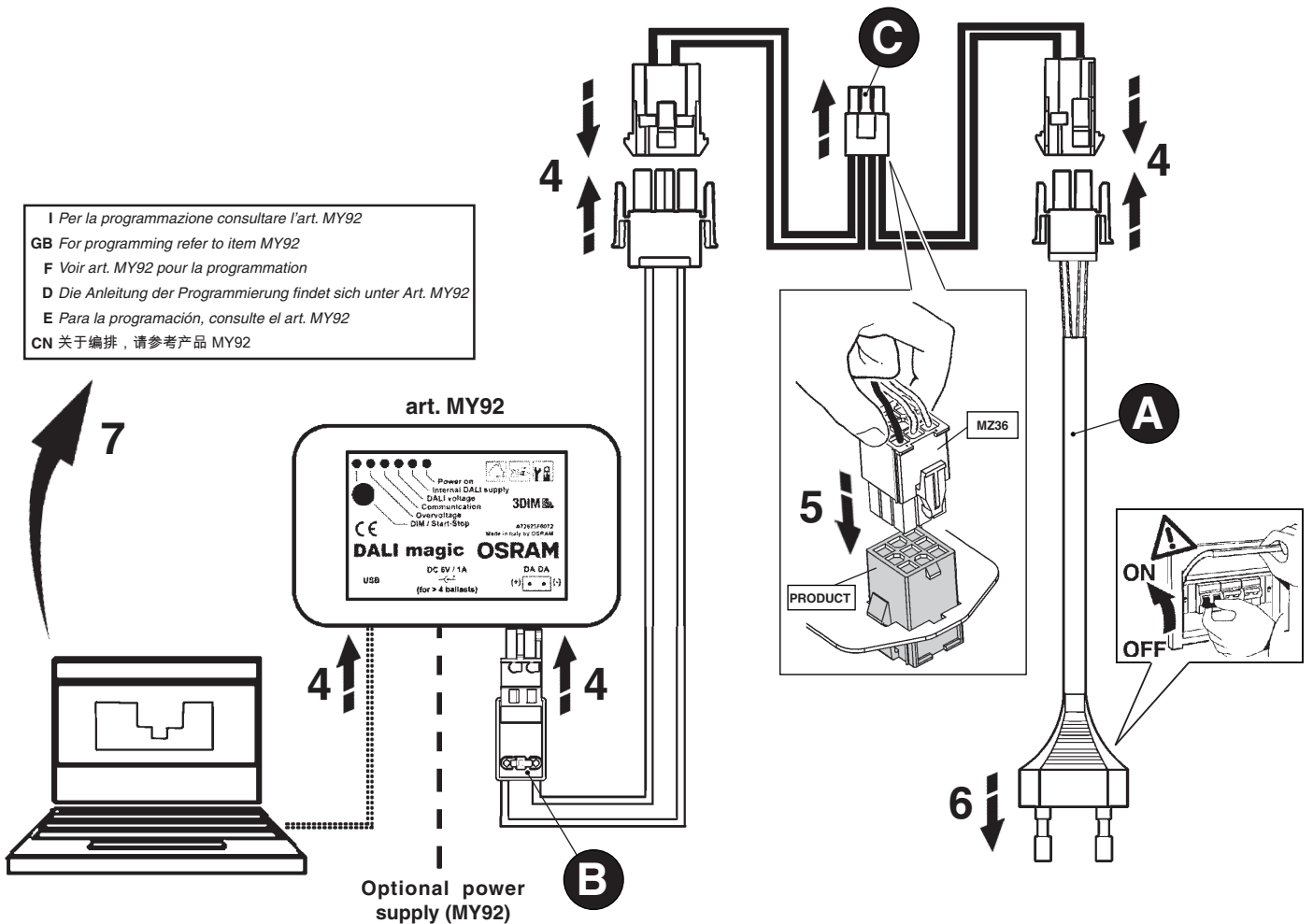
I Per la programmazione consultare l'art. MY92
 GB For programming refer to item MY92
 F Voir art. MY92 pour la programmation
 D Die Anleitung der Programmierung findet sich unter Art. MY92
 E Para la programación, consulte el art. MY92
 CN 关于编排, 请参考产品 MY92

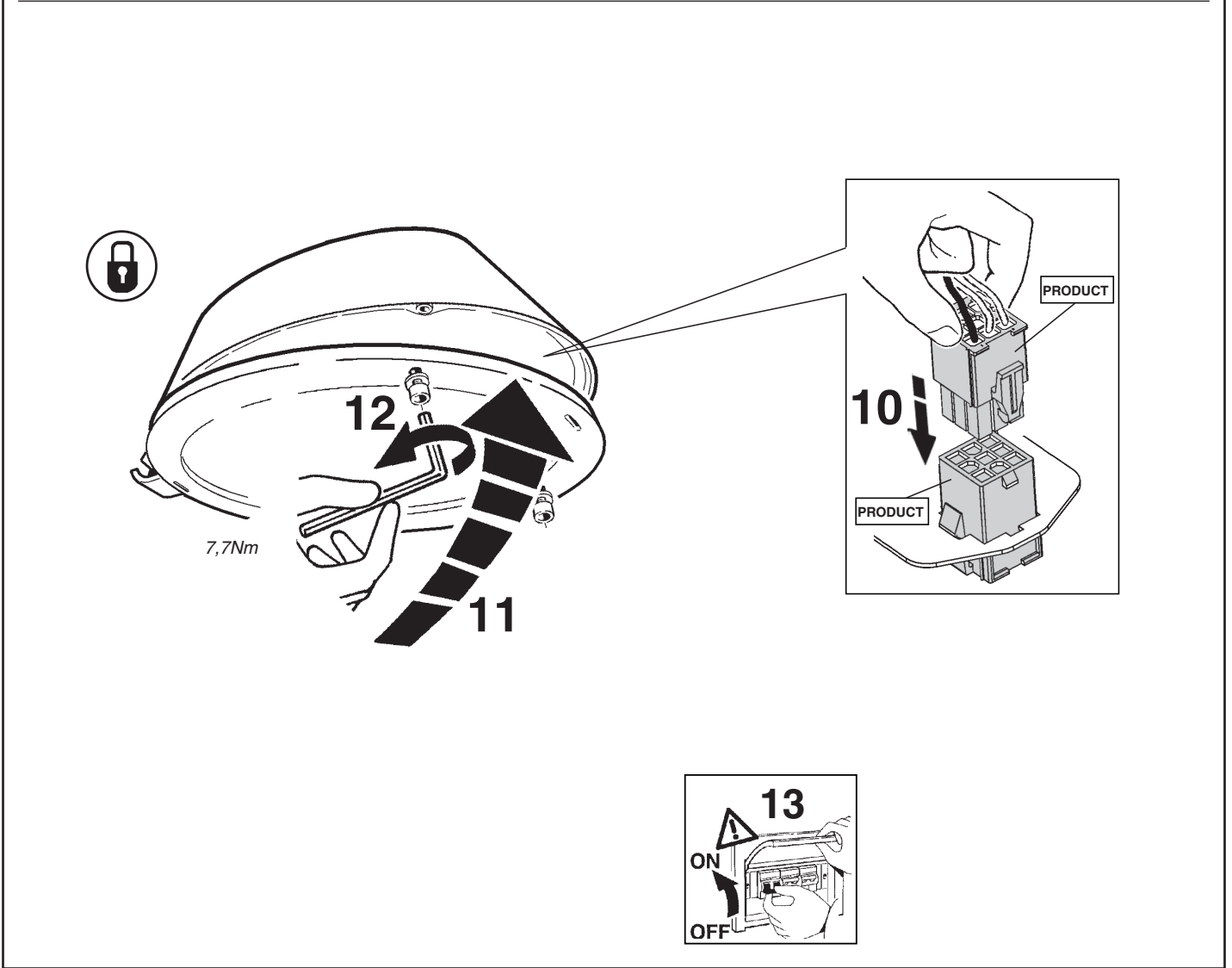
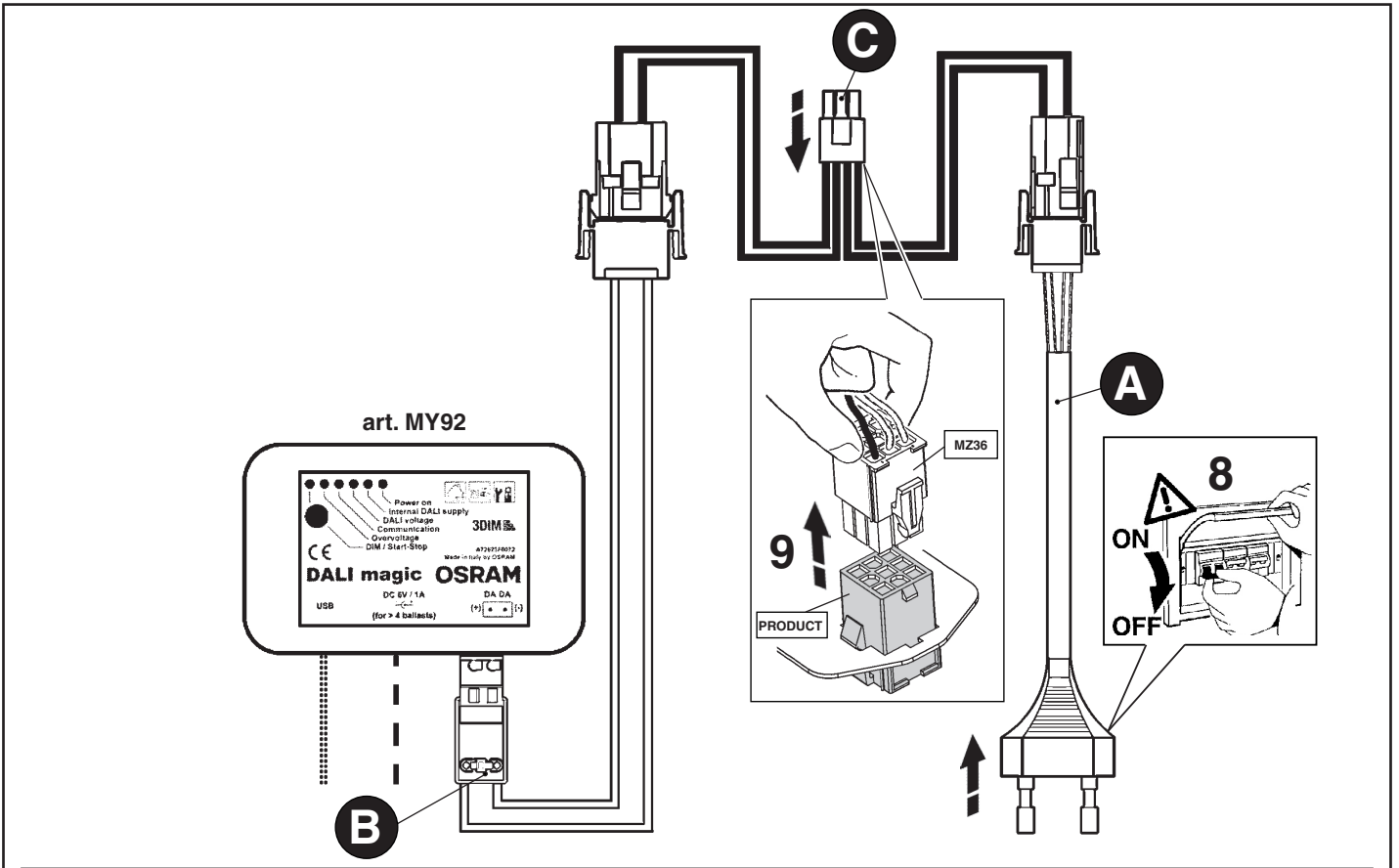


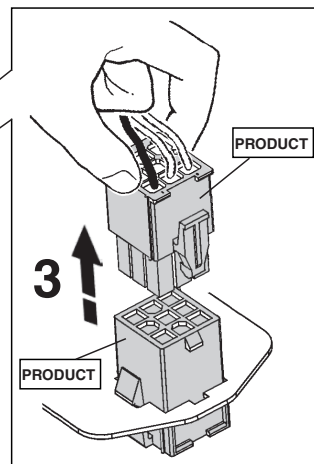
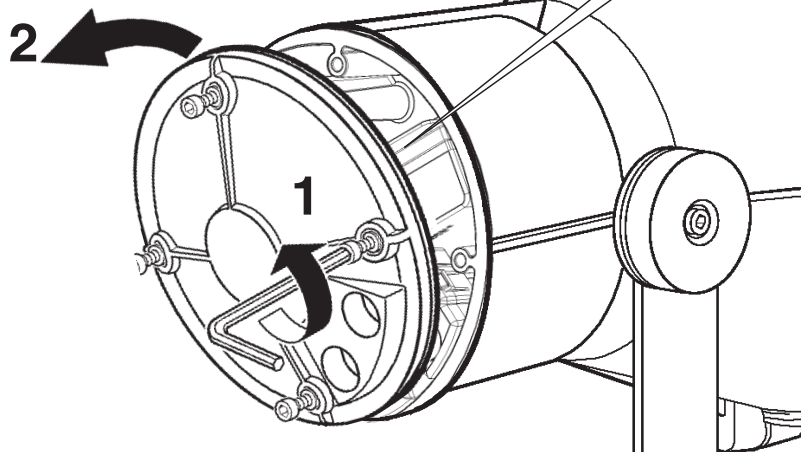
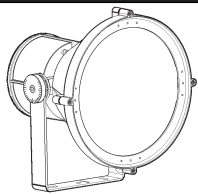




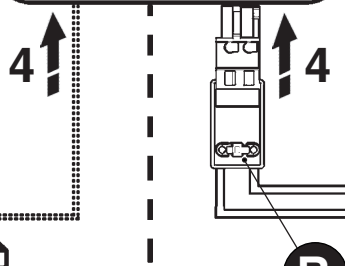
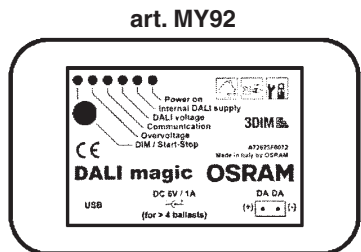
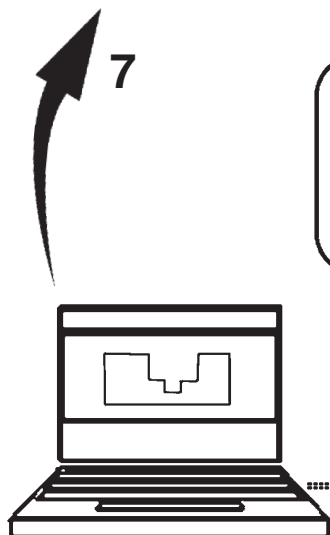
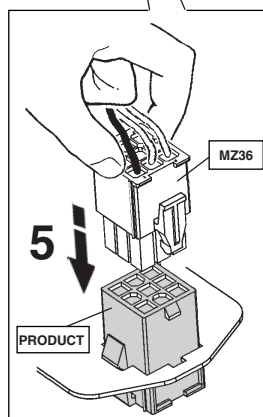
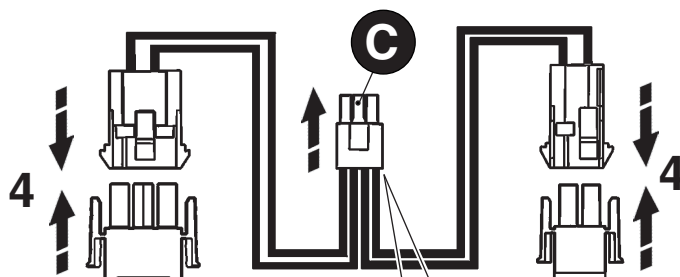
I Per la programmazione consultare l'art. MY92
 GB For programming refer to item MY92
 F Voir art. MY92 pour la programmation
 D Die Anleitung der Programmierung findet sich unter Art. MY92
 E Para la programación, consulte el art. MY92
 CN 关于编排, 请参考产品 MY92



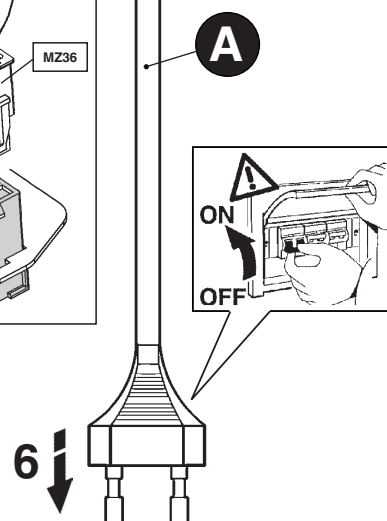


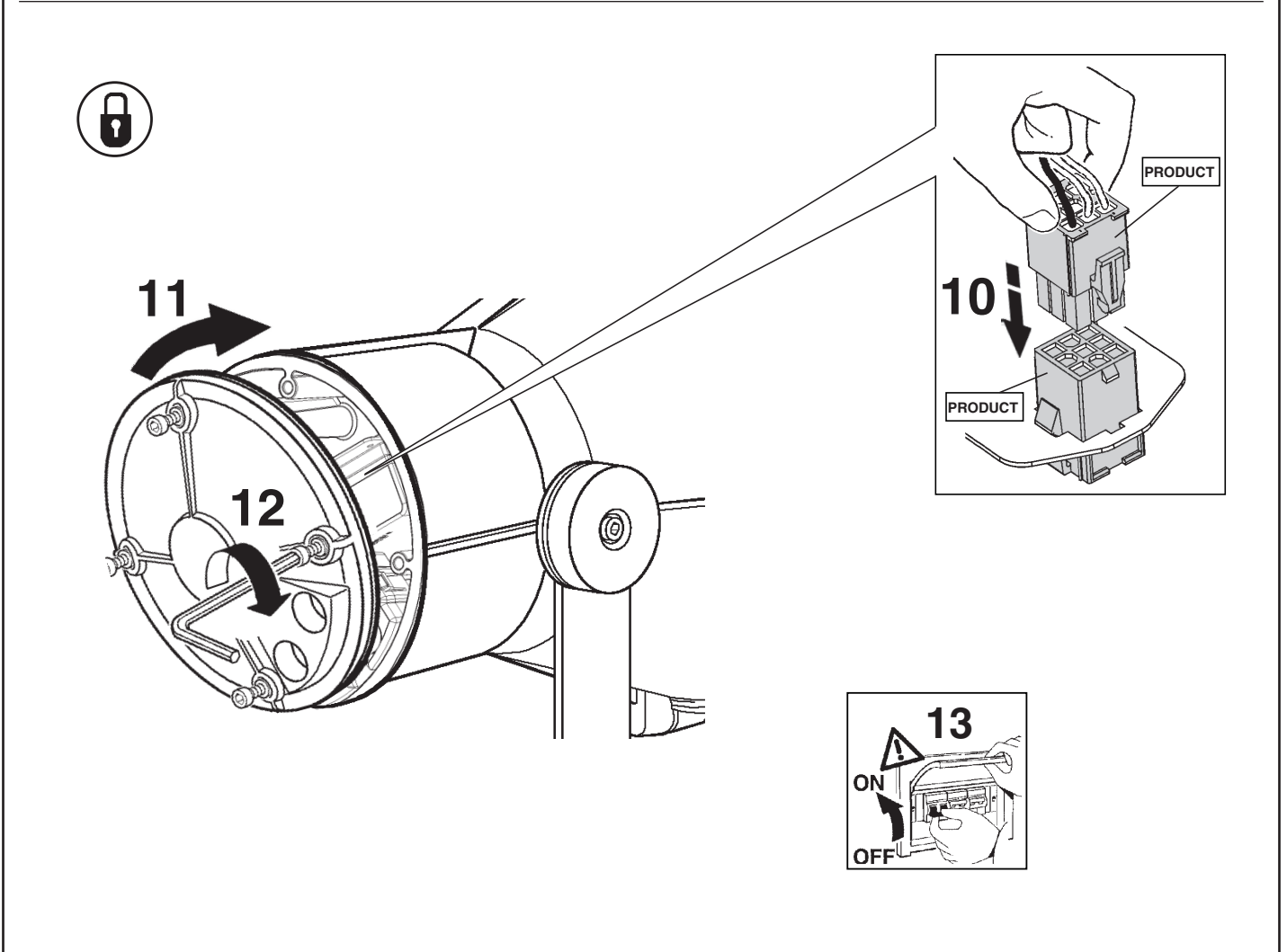
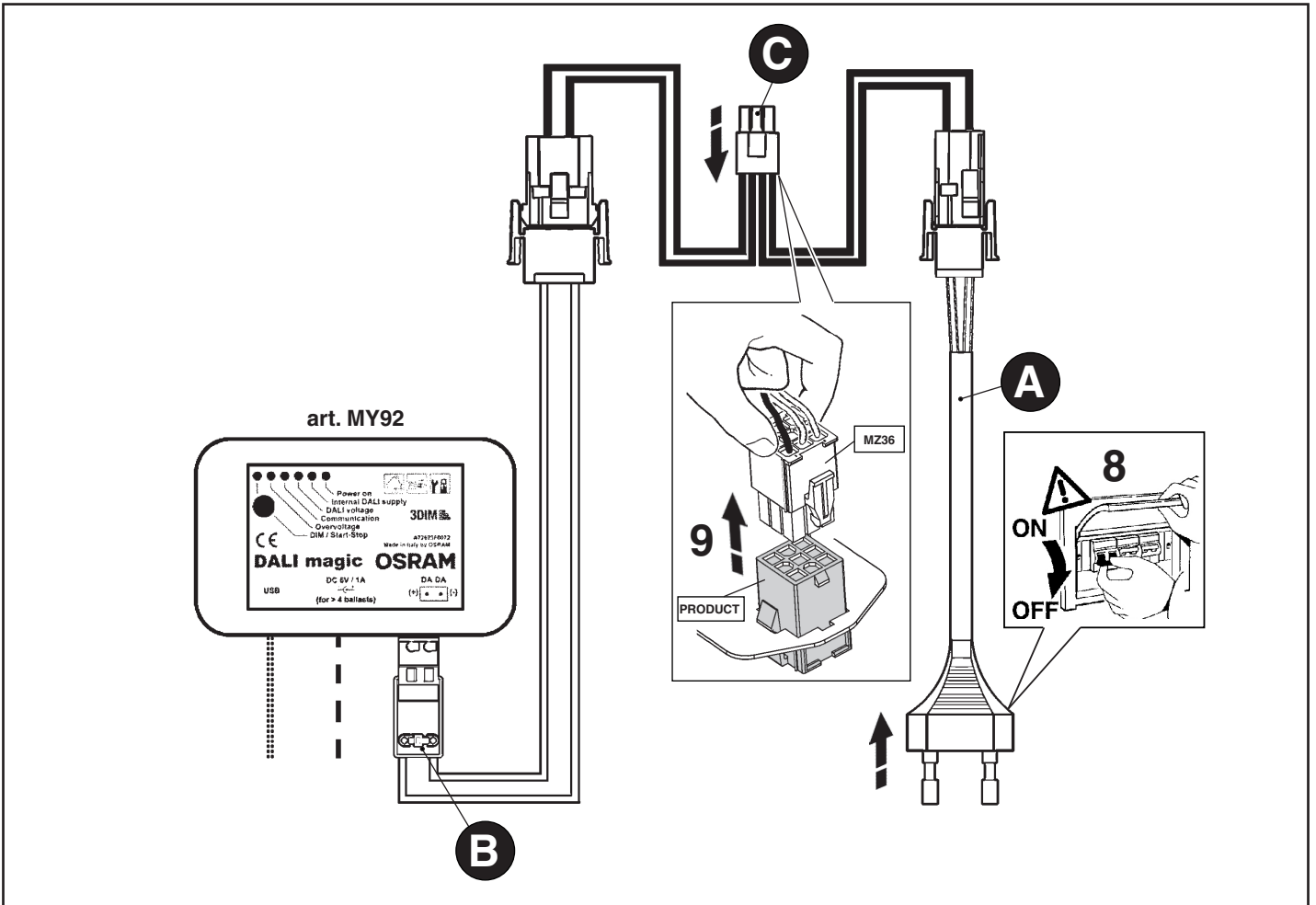


I Per la programmazione consultare l'art. MY92
 GB For programming refer to item MY92
 F Voir art. MY92 pour la programmation
 D Die Anleitung der Programmierung findet sich unter Art. MY92
 E Para la programación, consulte el art. MY92
 CN 关于编排, 请参考产品 MY92



Optional power supply (MY92)





I Si consiglia di effettuare la programmazione con "art. MY92" in assenza di umidità o pioggia e di non lasciare per lungo tempo il prodotto aperto.

GB It is advisable to avoid programming with 'item MY92' in rainy or humid conditions, or to leave the product open for a long time.

F Il est conseillé d'effectuer la programmation avec l'art. MY92, à l'abri de l'humidité ou de la pluie et de ne pas laisser le produit ouvert trop longtemps.

D Die Programmierung mit Art. MY92 nur bei trockener Witterung durchführen und das Gerät nicht zu lange geöffnet lassen.

E Se recomienda efectuar la programación con el "art. MY92" en ausencia de humedad o lluvia, y no dejar el producto abierto durante mucho tiempo.

CN 我们建议在非潮湿或不下雨的情况下，使用产品 MY92 进行编排，并注意不要使产品长时间处于打开状态。

I Per maggiori informazioni sul funzionamento del software art. MY92 contattare l'azienda "iGuzzini".


GB Please contact "iGuzzini" for further information on the operation of software art. MY92.

F Pour en savoir plus sur le fonctionnement du logiciel art. MY92, contacter l'entreprise « iGuzzini ».

D Ausführliche Informationen über die Funktionsweise der Software (Art. MY92) erhalten Sie beim Hersteller iGuzzini.

E Para más información sobre el funcionamiento del software art. MY92 contactar con la empresa "iGuzzini".

CN 更多关于 MY92 型号软件运行信息，请联系 "iGuzzini" 公司。

 **I** In caso di manutenzione prolungata con elevata umidità, il prodotto deve essere socchiuso e lasciato acceso per mezz'ora per poi richiuderlo.

GB If extended maintenance is carried out at a high humidity level, the product should be half-closed and left on for half an hour and then closed up.

F En cas de travaux d'entretien prolongés en environnement très humide, laisser le produit entrouvert et allumé pendant une demi-heure avant de le refermer.

D Nach einem längeren Wartungseingriff bei erhöhter Feuchtigkeit die Abdeckung nur auflegen und das Produkt eine halbe Stunde lang eingeschaltet lassen, bevor es wieder geschlossen wird.

E En caso de mantenimiento prolongado con alto porcentaje de humedad, entrecerrar el producto y dejarlo encendido media hora antes de cerrarlo.

CN 如果扩展维护在高度潮湿的环境中进行，产品需要被半闭合置于一边晾干30分钟，然后再闭合。