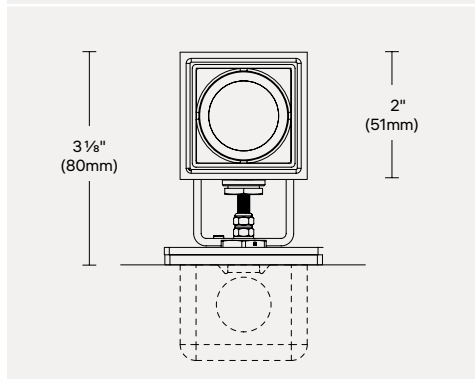


IIPRO 2 WITH SNOOT

Projector - Remote

Project: _____

Type: _____



Collection of outdoor projectors available in five sizes, ideal for urban architecture and residential environments. Featuring a compact, streamlined design to simplify installation and maintenance while ensuring minimal visual impact.

PHOTOMETRIC SUMMARY

| Optic | Lumens (lm) | Efficacy (lm/W) | Max Candela (cd) |
|----------|-------------|-----------------|------------------|
| SP - 10° | 215 | 61 | 3 960 |
| MD - 20° | 215 | 47 | 1 305 |

For 3000K, 80CRI. Consult [page 4](#) for full photometric data.

FINISH OPTIONS

| | | | |
|----|----|----|----|
| 01 | 02 | 15 | F5 |
|----|----|----|----|

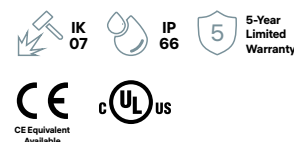
Consult factory for custom finishes

OPTIC OPTIONS



FEATURES

- Ground and vertical or horizontal surface mounting [page 2](#)
- 0-10V dimming down to 1%
- Additional sizing available with integral driver:
[3 \(3 1/4" \)](#), [5 \(5 1/4" \)](#), [6 \(6 1/8" \)](#) & [7 \(7 5/8" \)](#)
- Additional sizing available with remote driver:
[2 \(2" \)](#)
- Consult factory for further customization
- Full specification available [page 3](#)



ORDERING INFO

PRODUCT CODE

EXAMPLE: IIPRO-CO-P-830-MD-REM-01

| MODEL | MOUNTING | LED | OPTIC | VOLTAGE | FINISH |
|---|----------------|----------------------|------------------|---------------|---------------------------------|
| IIPRO-CO iPro 2 with Snoot 2"(51mm) | P Projector | 830 3000K, 80CRI | SP Spot 10° | REM Remote | 01 White |
| | | 840 4000K, 80 CRI | MD Medium 20° | | 02 Black |
| | | | | | 15 Gray |
| | | | | | F5 Rust Brown |
| | | | | | RAL# ¹ Custom RAL |

¹ Additional fees may apply for custom finish. Contact factory for details.

ACCESSORIES

To be ordered separately.

CONNECTION ACCESSORY CODE

EXAMPLE: 9015-9016-KIT

CONNECTION ACCESSORIES

More information available on [page 2](#).

9015-9016-KIT
Female and male
connector.

DRIVER CODE

EXAMPLE: 4549-0500-027-UNV-ED10

DRIVER

Driver options are available on [page 2](#).

IPRO 2 WITH SNOOT Projector - Remote

Project: _____
Type: _____

GROUND INSTALLATION

To be ordered separately.
For installation, consult instruction sheet.

SPIKE FOR GROUND / GARDEN APPLICATIONS



IX270
Fixed Spike

Color Black
Length 14" (355mm)

CONNECTION ACCESSORIES

To be ordered separately.

WATERPROOF IP68 FIELD CONNECTOR

No finish option available.



9015-9016-KIT
Female and male connector.
(0.19" - 0.37" (5-9.5mm)
cable, 2p 16-24 AWG
conductors)

REMOTE LED DRIVER OPTIONS

DRIVER CODE

EXAMPLE: 4549-0500-027-UNV-ED10

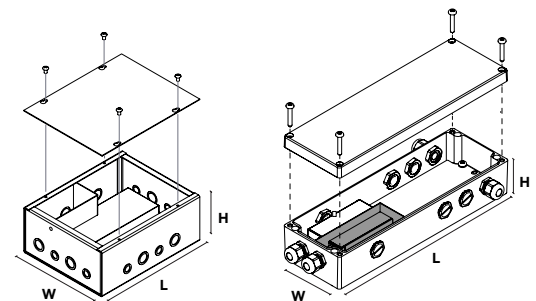
| INDOOR RATED DRIVER BOX MODELS | MIN-MAX UNITS | | OUTDOOR RATED DRIVER BOX MODELS | MIN-MAX UNITS | |
|-----------------------------------|-----------------------|-----------------------|------------------------------------|-----------------------|-----------------------|
| | MD OPTIC (4.5W) | SP OPTIC (3.5W) | | MD OPTIC (4.5W) | SP OPTIC (3.5W) |
| 4450-0500-027-UNV-ED10 | 1-6 | - | 4549-0500-027-UNV-ED10 | 1-6 | - |
| 4450-1050-030-UNV-ED10 | - | 1-9 | 4549-1050-030-UNV-ED10 | - | 1-9 |

DRIVER BOX MODEL DESCRIPTION

| MODEL (L x W x H) | CONSTANT CURRENT | WATTAGE | VOLTAGE | DIMMING PROTOCOL |
|--|--|---------------------------------|------------------------|---|
| 4450 8" x 8" x 4" (203 x 203 x 102mm) | 0500 to 1050 500mA to 1050mA | 027 to 030 27W to 30W | UNV 120-277V | ED10 0-10V ELDOLED ECOdrive Dimming Range Down to $\pm 1\%$ Max Distance 118ft (36m) ¹ |
| 4549 14.5" x 5" x 3.5" (368 x 127 x 89mm) | | | | |

¹ Max distance cable calculated for 16AWG cable. Contact customer service for longer remote distance.

DRIVER BOX DIMENSIONS

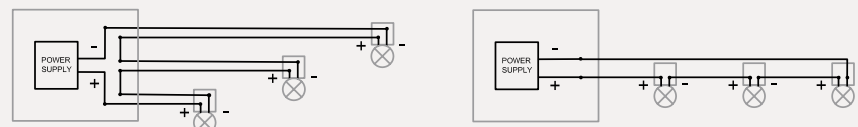


INDOOR RATED

OUTDOOR RATED

WIRING DIAGRAMS

Multiple luminaires must be connected in series (home run or fixture chain).



IPRO 2 WITH SNOOT

Projector - Remote

Project: _____

Type: _____

SPECIFICATIONS

LUMEN MAINTENANCE

80% of initial lumens at 100 000 hours (L80 B10) T77°F (25°C)
80% of initial lumens at 74 000 hours (L80 B10) T104°F (40°C)

MATERIAL

Optical body and frame: Die-cast aluminum

Reflector: Formed aluminum

Lens: PMMA and thermoplastic.

Protective Screen: 1/8" (4mm) tempered sodium-calcium glass.

MOUNTING

Wall mounting system. Supplied with mounting adapter plate for 2" single gang junction box installation.

ADJUSTMENT

Adjustable 95°/40° from horizontal line.

ELECTRICAL

Remote LED driver option available on [page 2](#).

DIMMING

See remote options on [page 2](#).

FINISH

Black (RAL9005), Gray (RAL9007), Rust Brown (RAL8017), and White (RAL9016) painted with a high level of weather and UV resistance. The semi-gloss finish coating is electrostatically applied durable acrylic enamel baked at high temperatures for superior color retentive finish. We provide RAL numbers that are similar, but we cannot guarantee an exact color match. For a more accurate color and gloss match, please contact customer service for a sample chip.

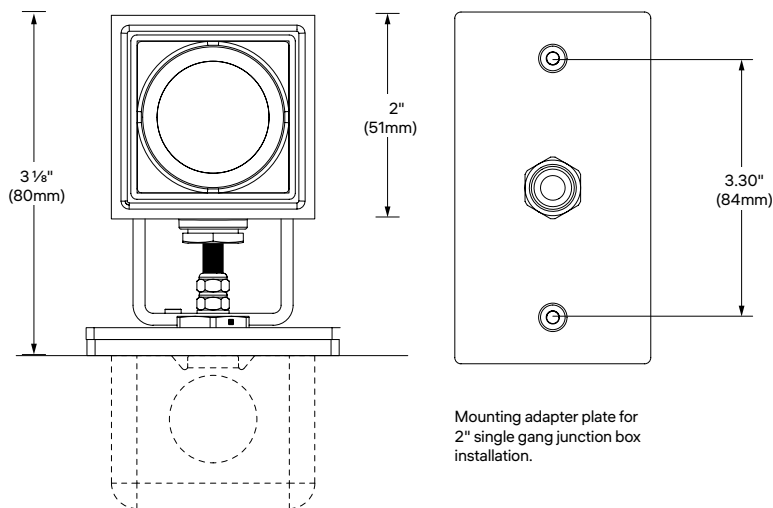
OPERATING TEMPERATURE

-30°C to 50°C (-22°F to 122°F)

WEIGHT

0.6lb (0.3kg)

DIMENSIONS



FAMILY OVERVIEW

Low voltage version with remote LED driver



CM - IPRO 2
2" (51mm)



Light Blade Spot Medium



CO - IPRO 2 + SNOOT
2" (51mm)



Spot Medium



Flood Very Wide Flood

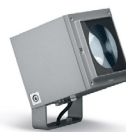
Line voltage version with integral LED driver



NM - IPRO 3
3 1/4" (81mm)



Spot Flood Very Wide Flood



SC - IPRO 5
5 1/4" (132mm)



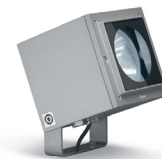
Medium Flood Wide Flood



MC - IPRO 6
6 1/8" (155mm)



Spot Flood Wide Flood



LC - IPRO 7
7 5/8" (192mm)



Medium Flood Wide Flood



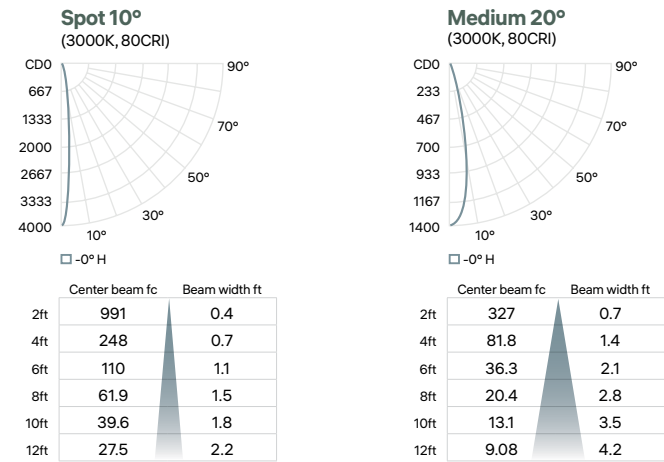
Elliptical Horizontal Elliptical Vertical

IPRO 2 WITH SNOOT
Projector - Remote

Project: _____
Type: _____

PHOTOMETRIC DATA

| CCT (K) | CRI | POWER (W) | OPTIC | LUMENS (lm) | EFFICACY (lm/W) | MAX CANDELA (cd) | MODELS |
|------------|-----|--------------|------------|----------------|--------------------|---------------------|-----------------------|
| 3000 | 80 | 3.5 | Spot 10° | 215 | 61 | 3 960 | IIPRO-CO-P-830-SP-REM |
| | | 4.5 | Medium 20° | 215 | 47 | 1 305 | IIPRO-CO-P-830-MD-REM |



| | | |
|-------------|-------|-------|
| CCT options | 3000K | 4000K |
| CRI options | 80CRI | 80CRI |
| Multiplier | 1 | 1 |