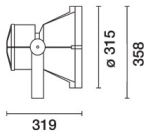
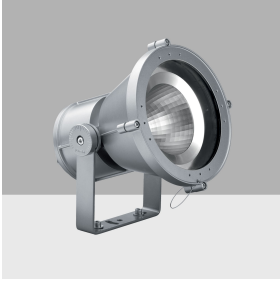


Last information update: February 2025

Product configuration: E986

E986: Spotlight with bracket - Warm White COB LED - Integrated electronic control gear - Wide Flood Optic (WF)



Product code

E986: Spotlight with bracket - Warm White COB LED - Integrated electronic control gear - Wide Flood Optic (WF)

Technical description

Spotlight designed to use Warm White COB LED lamps and a wide flood optic. Can be installed at ground level, on walls (using screw anchors) and on pole mounting systems. Consists of an optical assembly, a component box, a glass-holding frame and bracket. The optical assembly component box and glass-holding frame are made of EN1706AC 46100LF aluminium alloy and subjected to a multi-step, pre-treatment process, in which the main phases are degreasing, fluorozirconation (a protective surface film) and sealing (with a nano-structured silane layer). The following painting stage consists of a primer and a liquid acrylic paint, cured at 150°C, with a high level of weather and UV ray resistance. The 4 mm thick, tempered, sodium-calcium, closing glass is colourless, transparent and comes complete with a seal. The black 60 Shore A silicone seal has been subject to a post-curing treatment, in an oven, for 4 hours at 220 °C. The glass unit and seal is fixed to the frame with silicone. The product comes complete with a warm white colour, monochrome COB LED circuit, an optic with a 99.93% super-pure aluminium OPTIBEAM reflector with a polished, anodized surface and built-in electronic ballast. Galvanized steel ballast holding plate; extraordinary maintenance is simplified thanks to quick-coupling connectors between the control gear and the LEDs and between the control gear and the wiring terminal block. The box and rear cover are made of painted aluminium alloy and come complete with spacers and captive screws. The spotlight can be adjusted by ±115° in the vertical plane using a painted steel bracket, with a graduated scale showing 10° steps and mechanical stops to guarantee stable aiming of the light beam. Horizontal aiming is performed using the holes and slots in the bracket. Access to the optical assembly is simple thanks to a nickel-plated brass decompression valve which eliminates the product's internal vacuum. Set up for pass-through wiring using a double M24x1.5 nickel-plated brass cable gland (suitable for cables with 7÷16mm diameter). All external screws used are made of A2 stainless steel and are of the captive type. The luminaire technical characteristics conform to EN60598-1 standards and particular requirements.

Installation

The luminaire can be floor, ceiling or wall-mounted using a support bracket that can be secured with screw anchors (Fisher type or similar) for concrete, cement and solid brick or various other available accessories. MultiWoody, Citywoody and FrameWoody luminaires with a square structure can also be installed on poles.

Colour

White (01) | Black (04) | Grey (15) | Rust Brown (F5)

Weight (Kg)

7.6

Mounting

wall arm|pole arm|ground surface|wall surface|ground anchored|wall bracket|ceiling surface|u-bracket|pole-top

Wiring

Control gear complete with electronic ballast (220÷240Vac 50/60Hz) and a wiring terminal block.

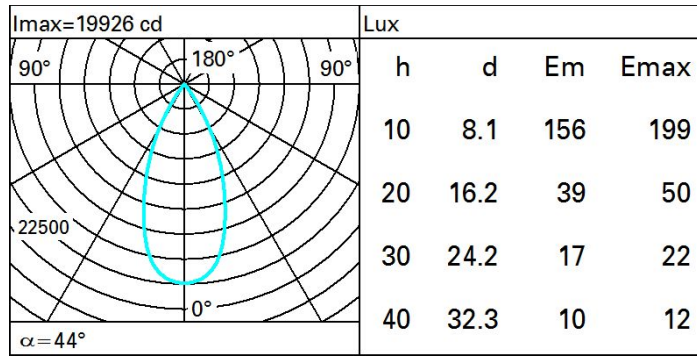
Complies with EN60598-1 and pertinent regulations



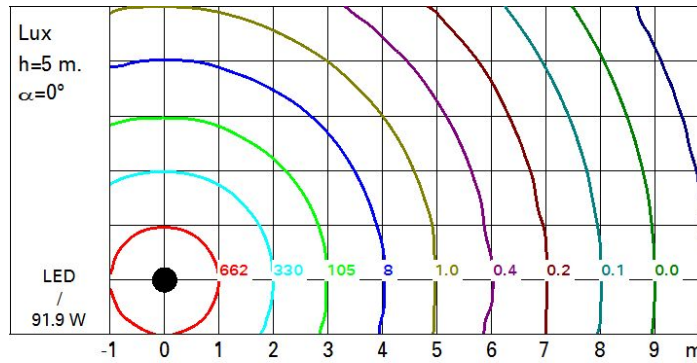
Technical data

lm system:	11033	Life Time LED 1:	100,000h - L80 - B10 (Ta 25°C)
W system:	91.9	Life Time LED 2:	86,000h - L80 - B10 (Ta 40°C)
lm source:	13150	Lamp code:	LED
W source:	82	Number of lamps for optical assembly:	1
Luminous efficiency (lm/W, real value):	120.1	ZVEI Code:	LED
lm in emergency mode:	-	Number of optical assemblies:	1
Total light flux at or above an angle of 90° [Lm]:	0	Intervallo temperatura ambiente:	from -30°C to 50°C.
Light Output Ratio (L.O.R.) [%]:	84	Power factor:	See installation instructions
Beam angle [°]:	44°	Inrush current:	65 A / - μs
CRI (minimum):	80	Maximum number of luminaires of this type per miniature circuit breaker:	B10A: 3 luminaires B16A: 5 luminaires C10A: 5 luminaires C16A: 8 luminaires
Colour temperature [K]:	3000	Overvoltage protection:	10kV Common mode & 6kV Differential mode
MacAdam Step:	2	Control:	On/off

Polar



Isolux



UGR diagram

Corrected UGR values (at 13150 lm bare lamp luminous flux)																
Reflect.:		viewed crosswise					viewed endwise									
ceiling/cav	walls	work pl.	Room dim	x	y	0.70	0.70	0.50	0.50	0.30	0.70	0.70	0.50	0.50	0.30	
2H	2H	14.3	14.9	14.6	15.1	15.3	14.3	14.9	14.6	15.1	15.3	14.2	14.7	14.5	14.9	15.2
	3H	14.2	14.7	14.5	14.9	15.2	14.1	14.6	14.4	14.9	15.1	14.0	14.4	14.4	14.8	15.1
	4H	14.1	14.6	14.4	14.9	15.2	14.0	14.4	14.4	14.7	15.1	14.0	14.4	14.4	14.7	15.1
	6H	14.0	14.5	14.4	14.8	15.1	14.0	14.4	14.4	14.7	15.1	14.0	14.4	14.4	14.7	15.1
	8H	14.0	14.4	14.4	14.7	15.1	14.0	14.4	14.4	14.7	15.1	14.0	14.4	14.4	14.7	15.1
	12H	14.0	14.3	14.3	14.7	15.0	14.0	14.3	14.3	14.7	15.0	14.0	14.3	14.3	14.7	15.0
4H	2H	14.1	14.6	14.4	14.9	15.1	14.1	14.6	14.4	14.9	15.2	14.0	14.3	14.3	14.7	15.0
	3H	14.0	14.3	14.3	14.7	15.0	13.9	14.2	14.3	14.6	15.0	13.7	14.0	14.2	14.4	14.9
	4H	13.9	14.2	14.3	14.6	15.0	13.7	14.0	14.2	14.4	14.9	13.7	14.0	14.2	14.4	14.9
	6H	13.8	14.1	14.2	14.5	14.9	13.7	14.0	14.2	14.4	14.9	13.7	14.0	14.2	14.4	14.9
	8H	13.7	14.0	14.2	14.4	14.9	13.7	14.0	14.2	14.4	14.9	13.7	14.0	14.2	14.4	14.9
	12H	13.7	13.9	14.1	14.4	14.8	13.7	13.9	14.1	14.4	14.8	13.7	13.9	14.1	14.4	14.8
8H	4H	13.7	14.0	14.2	14.4	14.9	13.7	14.0	14.2	14.4	14.9	13.6	13.9	14.1	14.3	14.8
	6H	13.6	13.9	14.1	14.3	14.8	13.6	13.8	14.1	14.2	14.7	13.6	13.8	14.1	14.2	14.7
	8H	13.6	13.8	14.1	14.2	14.7	13.5	13.7	14.0	14.2	14.7	13.5	13.7	14.0	14.2	14.7
	12H	13.5	13.7	14.0	14.2	14.7	13.5	13.7	14.0	14.2	14.7	13.5	13.7	14.0	14.2	14.7
12H	4H	13.7	13.9	14.1	14.4	14.8	13.7	13.9	14.1	14.4	14.8	13.6	13.8	14.1	14.2	14.7
	6H	13.6	13.8	14.1	14.2	14.7	13.5	13.7	14.0	14.2	14.7	13.5	13.7	14.0	14.2	14.7
	8H	13.5	13.7	14.0	14.2	14.7	13.5	13.7	14.0	14.2	14.7	13.5	13.7	14.0	14.2	14.7
Variations with the observer position at spacing:																
S =	1.0H	6.5 / -17.3					6.5 / -17.3									
	1.5H	9.3 / -19.2					9.3 / -19.2									
	2.0H	11.3 / -20.3					11.3 / -20.3									