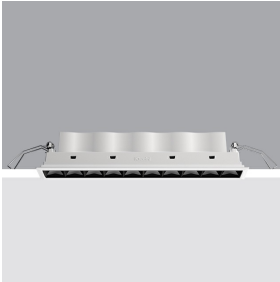


Last information update: February 2025



Product code

2392: 10-cell recessed luminaire - LED - Warm White - Wide Oval - transversal optic

Technical description

Rectangular miniaturised recessed luminaire with 10 optical elements fitted with LED lamps - fixed Wide Oval optics - wide opening asymmetrical emission with a transversal effect. Main body with die-cast aluminium radiant surface, version with perimeter surface frame. Metallised thermoplastic high definition optics, integrated in a rear position in the black anti-glare screen. Supplied with DALI dimmable control gear unit connected to the luminaire.

Installation

recessed with steel wire springs for false ceilings from 1 to 25 mm thick - preparation hole 37 x 274

Colour

White (01) | Black / Black (43) | Black / White (47) | Grey / Black (74)*

* Colours on request

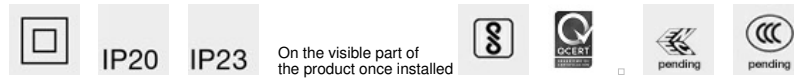
Mounting

wall recessed|ceiling recessed

Wiring

on control gear box with quick-coupling connections

Complies with EN60598-1 and pertinent regulations



Technical data

lm system:	1620 (*)	CRI:	90
W system:	21 (*)	Colour temperature [K]:	3500
lm source:	2281 (*)	Number of lamps for optical assembly:	1
W source:	21 (*)	ZVEI Code:	LED
Luminous efficiency (lm/W, real value):	77.0 (*)	Number of optical assemblies:	1
lm in emergency mode:	-	Control:	DALI-2