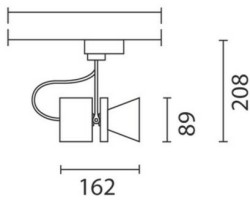
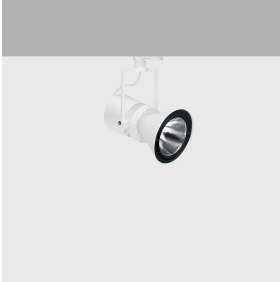


Last information update: July 2024

Product configuration: RR61

RR61: Small body spotlight - warm white - DALI - MEDIUM



Product code

RR61: Small body spotlight - warm white - DALI - MEDIUM

Technical description

Adjustable spotlight with adapter for installation on an electrified DALI track. High yield LED lamp with high color rendering index. Luminaire body made of die-cast aluminium and thermoplastic material. Swivel joints allow the spotlight to be rotated by 360° about the vertical axis and tilted by 90° tilting relative to the horizontal plane. Mechanical aiming locks fitted on both the spotlight and adapter allow rotation and tilting movements to be locked in position to ensure efficient light aiming even after the original installation or during maintenance. The optical assembly is equipped with an accessory holding ring designed to contain a flat accessory. Another external component can also be applied - asymmetric screen / directional flaps; the external accessories can rotate freely about the spotlight longitudinal axis. DALI dimmable power supply unit integrated in the spotlight body.

Installation

Installation on an electrified track.

Colour

White (01) | Grey / Black (74)

Weight (Kg)

0.68

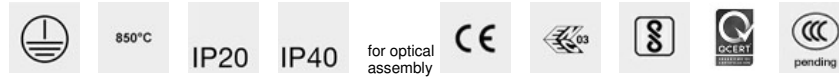
Mounting

dali track

Wiring

Integrated DALI dimmer power supply unit.

Complies with EN60598-1 and pertinent regulations



Technical data

Im system:	1706	CRI (minimum):	90
W system:	22.3	Colour temperature [K]:	3000
Im source:	2080	MacAdam Step:	2
W source:	17	Life Time LED 1:	> 50,000h - L90 - B10 (Ta 25°C)
Luminous efficiency (lm/W, real value):	76.5	Lamp code:	LED
Im in emergency mode:	-	Number of lamps for optical assembly:	1
Total light flux at or above an angle of 90° [Lm]:	0	ZVEI Code:	LED
Light Output Ratio (L.O.R.) [%]:	82	Number of optical assemblies:	1
Beam angle [°]:	18°	Control:	DALI-2

Polar

