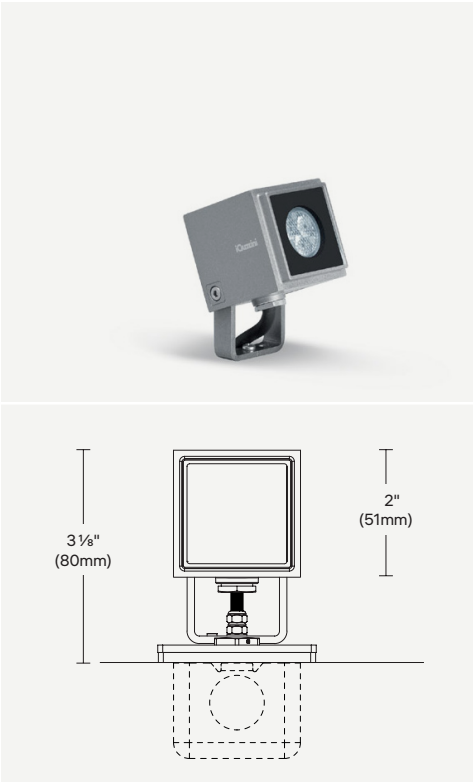


Project: \_\_\_\_\_  
Type: \_\_\_\_\_



Collection of outdoor projectors available in five sizes, ideal for urban architecture and residential environments. Featuring a compact, streamlined design to simplify installation and maintenance while ensuring minimal visual impact.

PHOTOMETRIC SUMMARY

Optic	Lumens (lm)	Efficacy (lm/W)	Max Candela (cd)
SP - 10°	240	68	3 920
MD - 22°	385	85	1 360
FL - 34°	345	76	670
VWF - 85°	195	55	125
LB - 4° x 46°	40	8	680

For 3000K, 80CRI. Consult [page 4](#) for full photometric data.

FEATURES

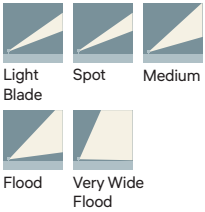
- Ground and vertical or horizontal surface mounting [page 2](#)
- 0-10V dimming down to 1%
- Additional sizing available with integral driver:  
[3 \( 3 1/4\"/>](#)

FINISH OPTIONS



Consult factory for custom finishes

OPTIC OPTIONS



ORDERING INFO

PRODUCT CODE EXAMPLE: IIPRO-CM-P-830-VWF-REM-01

MODEL	MOUNTING	LED	OPTIC	VOLTAGE	FINISH
IIPRO-CM iPro 2 2\"(51mm)	P Projector	830 3000K, 80CRI	SP Spot 10°	REM Remote	01 White
		840 4000K, 80 CRI	MD Medium 22°		02 Black
			FL Flood 34°		15 Gray
			VWF Very Wide Flood 85°		F5 Rust Brown
			LB Light Blade 4° x 46°		RAL# <sup>1</sup> Custom RAL

<sup>1</sup> Additional fees may apply for custom finish. Contact factory for details.

ACCESSORIES

To be ordered separately.

CONNECTION ACCESSORY CODE EXAMPLE: 9015-9016-KIT

CONNECTION ACCESSORIES

More information available on [page 2](#).

**9015-9016-KIT**  
Female and male connector.

DRIVER CODE EXAMPLE: 4549-0500-027-UNV-ED10

DRIVER

Driver options are available on [page 2](#).

Project: \_\_\_\_\_  
Type: \_\_\_\_\_

## GROUND INSTALLATION

To be ordered separately.  
For installation, consult instruction sheet.

### SPIKE FOR GROUND / GARDEN APPLICATIONS



**IX270**  
Fixed Spike

**Color** Black  
**Length** 14" (355mm)

## CONNECTION ACCESSORIES

To be ordered separately.

### WATERPROOF IP68 FIELD CONNECTOR

No finish option available.



**9015-9016-KIT**  
Female and male connector.  
(0.19" - 0.37" (5-9.5mm)  
cable, 2p 16-24 AWG  
conductors)

## REMOTE LED DRIVER OPTIONS

DRIVER CODE

EXAMPLE: 4549-0500-027-UNV-ED10

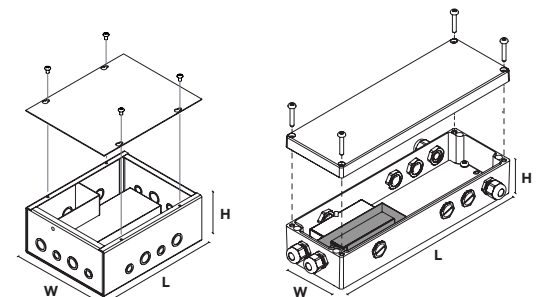
INDOOR RATED DRIVER BOX MODELS	MIN-MAX UNITS		OUTDOOR RATED DRIVER BOX MODELS	MIN-MAX UNITS	
	MD-FL-LB OPTIC (4.5W)	SP-VWF OPTIC (3.5W)		MD-FL-LB OPTIC (4.5W)	SP-VWF OPTIC (3.5W)
4450-0500-027-UNV-ED10	1-6	-	4549-0500-027-UNV-ED10	1-6	-
4450-1050-030-UNV-ED10	-	1-9	4549-1050-030-UNV-ED10	-	1-9

## DRIVER BOX MODEL DESCRIPTION

MODEL (L x W x H)	CONSTANT CURRENT	WATTAGE	VOLTAGE	DIMMING PROTOCOL
<b>4450</b> 8" x 8" x 4" (203 x 203 x 102mm)	<b>0500 to 1050</b> 500mA to 1050mA	<b>027 to 030</b> 27W to 30W	<b>UNV</b> 120-277V	<b>ED10</b> 0-10V ELDOLED ECOdrive <b>Dimming Range</b> Down to $\pm 1\%$ <b>Max Distance</b> 118ft (36m) <sup>1</sup>
<b>4549</b> 14.5" x 5" x 3.5" (368 x 127 x 89mm)				

<sup>1</sup> Max distance cable calculated for 16AWG cable. Contact customer service for longer remote distance.

## DRIVER BOX DIMENSIONS

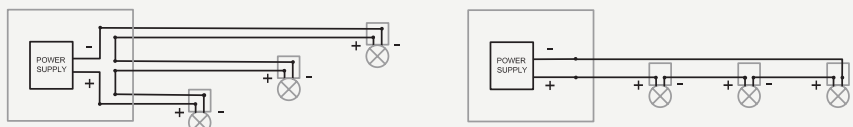


**INDOOR RATED**

**OUTDOOR RATED**

## WIRING DIAGRAMS

Multiple luminaires must be connected in series (home run or fixture chain).



**IPRO 2****Projector - Remote**

Project: \_\_\_\_\_  
 Type: \_\_\_\_\_

**SPECIFICATIONS****LUMEN MAINTENANCE**

80% of initial lumens at 100 000 hours (L80 B10) T77°F (25°C)  
 80% of initial lumens at 74 000 hours (L80 B10) T104°F (40°C)

**MATERIAL**

**Optical body and frame:** Die-cast aluminum

**Reflector:** Formed aluminum

**Lens:** PMMA and thermoplastic.

**Protective Screen:** 1/8" (4mm) tempered sodium-calcium glass.

**MOUNTING**

Wall mounting system. Supplied with mounting adapter plate for 2" single gang junction box installation.

**ADJUSTMENT**

Adjustable 95°/40° from horizontal line.

**ELECTRICAL**

Remote LED driver option available on [page 2](#).

**DIMMING**

See remote options on [page 2](#).

**FINISH**

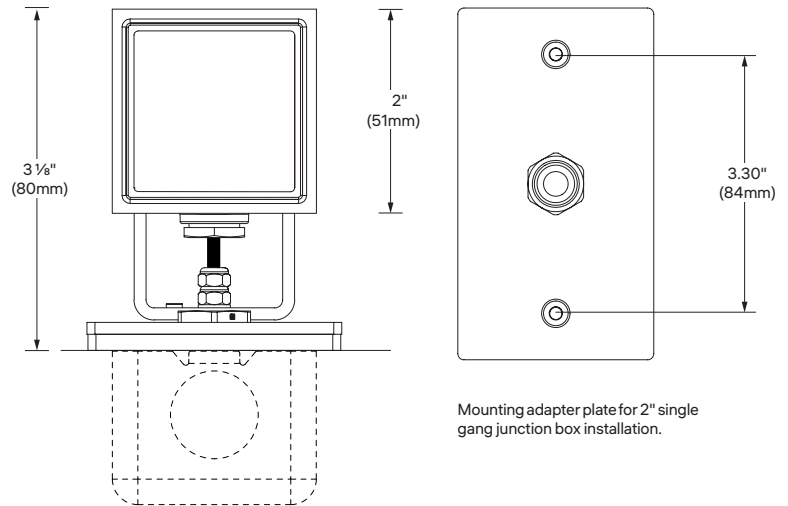
Black(RAL9005),Gray(RAL9007),RustBrown(RAL8017),andWhite(RAL9016) painted with a high level of weather and UV resistance. The semi-gloss finish coating is electrostatically applied durable acrylic enamel baked at high temperatures for superior color retentive finish. We provide RAL numbers that are similar, but we cannot guarantee an exact color match. For a more accurate color and gloss match, please contact customer service for a sample chip.

**OPERATING TEMPERATURE**

-30°C to 50°C (-22°F to 122°F)

**WEIGHT**

0.6lb (0.3kg)

**DIMENSIONS****FAMILY OVERVIEW**

Low voltage version with remote LED driver

**CM - IPRO 2**

2" (51mm)



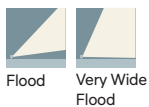
Light Blade Spot Medium

**CO - IPRO 2 + SNOOT**

2" (51mm)



Spot Medium



Flood Very Wide Flood

Line voltage version with integral LED driver

**NM - IPRO 3**

3 1/4" (81mm)



Spot Flood Very Wide Flood

**SC - IPRO 5**

5 1/4" (132mm)



Medium Flood Wide Flood

**MC - IPRO 6**

6 1/8" (155mm)



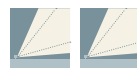
Spot Flood Wide Flood

**LC - IPRO 7**

7 5/8" (192mm)



Medium Flood Wide Flood



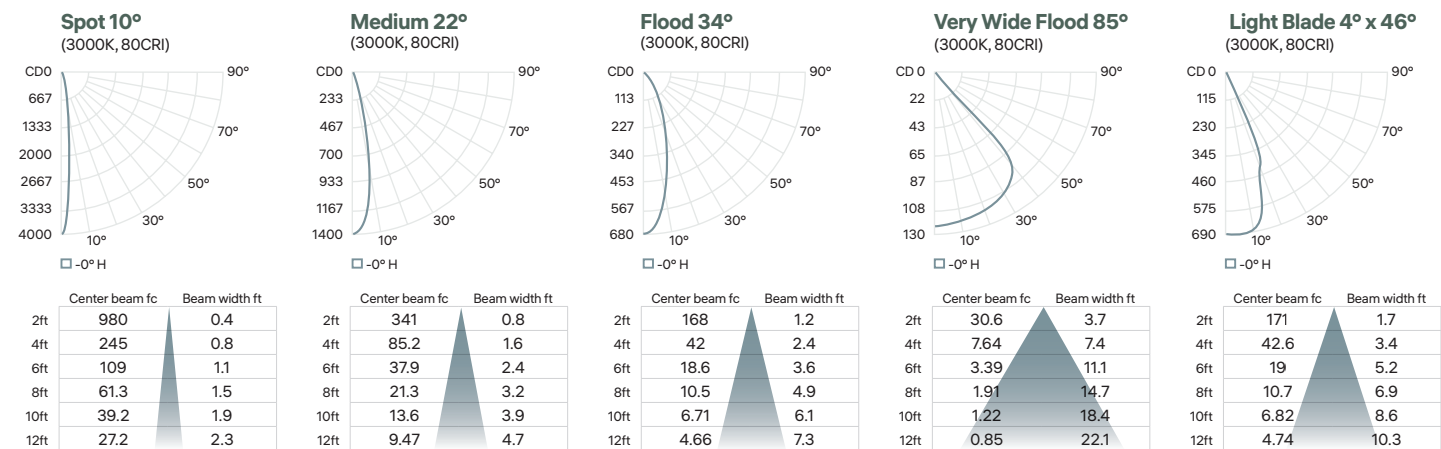
Elliptical Horizont. Elliptical Vertical

Project:

Type:

PHOTOMETRIC DATA

CCT (K)	CRI	POWER (W)	OPTIC	LUMENS (lm)	EFFICACY (lm/W)	MAX CANDELA (cd)	MODELS
3000	80	3.5	Spot 10°	240	68	3 920	IIPRO-CM-P-830-SP-REM
		4.5	Medium 22°	385	85	1 360	IIPRO-CM-P-830-MD-REM
		4.5	Flood 34°	345	76	670	IIPRO-CM-P-830-FL-REM
		3.5	Very Wide Flood 85°	195	55	125	IIPRO-CM-P-830-VWF-REM
		4.5	Light Blade 4° x 46°	40	8	680	IIPRO-CM-P-830-LB-REM



CCT options	3000K	4000K
CRI options	80CRI	80CRI
Multiplier	1	1