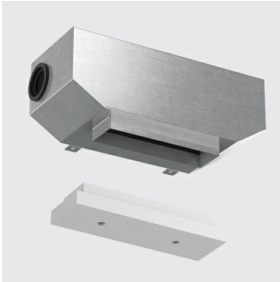


## Outer casing complete with adapter for recessed installation on concrete ceilings

Design iGuzzini

iGuzzini

Last information update: July 2024



### Accessory code

X111: Outer casing complete with adapter for recessed installation on concrete ceilings

### Technical description

Painted sheet steel outer casing for concrete ceilings with adapter for flush installation and closing cap. Made of painted sheet steel. For Laser Blade InOut version with two optical elements (L=83mm).

### Installation

On concrete ceilings. Recommended particle size for inert elements in concrete 0-25mm. For further information, please consult the instruction sheet.

### Colour

Indeterminate (00)

### Weight (Kg)

1

Complies with EN60598-1 and pertinent regulations

