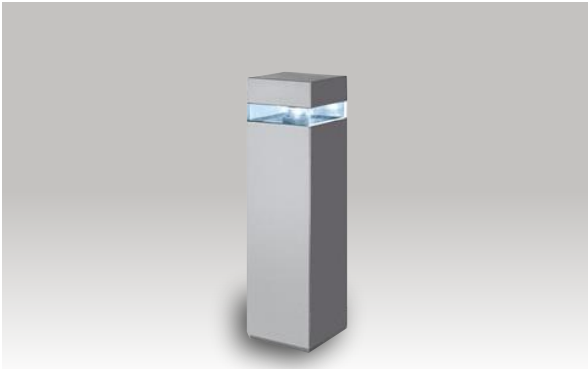


Project name: _____

Type: _____



General information

Luminaire characteristics:

Power input: 24.5W

Lumens: 788 to 840lm (delivered)

Luminaire efficacy: 32 to 34lm/W

Source: White LED, 3000K: 85CRI and 4000K: 80CRI.

Lumen maintenance: >80% of initial lumens at 50 000 hours (L80) LM-80 (LED) / LM-79 tested.

Optics: 360° symmetrical optic with a super-pure aluminum reflector. For version with no upward light emission contact factory.

Body: Die cast aluminum body and stainless steel rods fixed to the base

Electrical: Universal high efficiency electronic power supply, rated 50 000 H. 120-277V.

Mounting: Ground anchored.

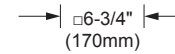
Finish: Gray (RAL9007)

Weight: 18.63lbs (8.45kg.)

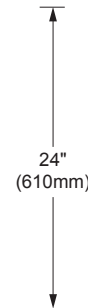
Warranty: 5 years limited warranty.

Certification: cULus listed.

Ratings: IP66, IK10.



TOP VIEW



SIDE VIEW

ORDERING INFO

MODEL	VOLTAGE	FINISH	ACCESSORIES (TO BE ORDERED SEPARATELY)	
<input type="radio"/> I.BW82 - 4000K <input type="radio"/> I.BW83 - 3000K	<input type="radio"/> UNV - 120-277V	<input type="radio"/> 15 - Gray	<input type="radio"/> I.B513 - Fixing plate with anchor bolts Ø10 7/8" (275mm) x h: 7" (179mm)	
			<input type="radio"/> I.X024-02 - Black screen for asymmetrical 180° emission	
			<input type="radio"/> I.X088-00 - Frosted diffuser	

DUE TO CONTINUOUS IMPROVEMENTS, THE INFORMATION HEREIN MAY BE CHANGED WITHOUT NOTICE.

LAST UPDATE: APRIL 28, 2015

MGD - R3